

Installation Instructions for „Drulo-Control“

Version 2.0.4.40 and higher



Contents

Installation Instructions for „Drulo-Control“	1
<i>Version 2.0.4.40 and higher</i>	<i>1</i>
Contents	2
List of Illustrations	3
Contact Details	4
1 Introduction.....	5
<i>1.1 Installation of the database</i>	<i>5</i>
1.1.1 Installation steps.....	5
<i>1.2 Installation of the Drulo-Control programme</i>	<i>13</i>

List of Illustrations

Illustration 1-1: Installation step 1.....	6
Illustration 1-2: Installation step 2.....	6
Illustration 1-3: Installation step 3.....	7
Illustration 1-4: Installation step 4.....	7
Illustration 1-5: Installation step 5.....	8
Illustration 1-6: Installation step 6.....	9
Illustration 1-7: Installation step 7.....	9
Illustration 1-8: Installation step 8.....	10
Illustration 1-9: Installation step 9.....	10
Illustration 1-10: Installation step 10.....	11
Illustration 1-11: Installation step 11.....	12
Illustration 1-12: Installation step 12.....	12
Illustration 1-13: Installation step 1.....	13
Illustration 1-14: Installation step 2.....	14
Illustration 1-15: Installation step 3.....	14
Illustration 1-16: Installation step 4.....	15
Illustration 1-17: optional Installation step 5 / 1.....	15
Illustration 1-18: optional Installation step 5 / 2.....	16
Illustration 1-19: Installation step 6.....	16
Illustration 1-20: Installation step 7.....	17
Illustration 1-21: Optional completion of installation 1	17
Illustration 1-22: Optional completion of installation 2	18

Contact Details

Firma

F.A.S.T. GmbH

Bössingerstr. 36

74243 Langenbeutingen

Contact: Herr Behrmann

Tel: 07946-92100-25

Fax: 07946-7153

E-Mail: info@fastgmbh.de

Behrmann@fastgmbh.de

Web: <http://www.fastgmbh.de/>

1 Introduction

Please read these Installation Instructions carefully before you start installing the Drulo-Control programme. So that a trouble-free use of the programme is guaranteed, two additional components have to be installed, before you start the installation of Drulo-Control programme. These two components are the Java Runtime Environment and the Mysql database. Nevertheless, the installation programme of Drulo-Control installed independently the Java Runtime Environment on your computer, if Java is not yet installed. Therefore you have only to install the database MySQL.

1.1 Installation of the database

One component to be installed prior to the installation of the Drulo-Control programme is the database. The current version of the Drulo-Control programme requires the database supplied by MySQL, version 5.0 up to 5.1. Newer MySQL versions are not supported. The installation of this database is implemented through a so-called Installer (also called Setup programme) which is capable of installing such a database independently and without requiring any specific information on the database.

This Installer can either be downloaded from:

- [Download 32Bit or 64Bit version](#)

or it can be obtained from F.A.S.T. GmbH.

1.1.1 Installation steps

When the Installer has been started, the window as shown in the illustration below will appear. Please click on the Next button.



Illustration 1-1: Installation step 1

After you have clicked on **Next**, a query window will appear and you will be requested to determine the extent of the installation of the database. Usually the extent of the installed software as provided under **Typical** is sufficient. After you have clicked on **Typical**, click on **Next**.

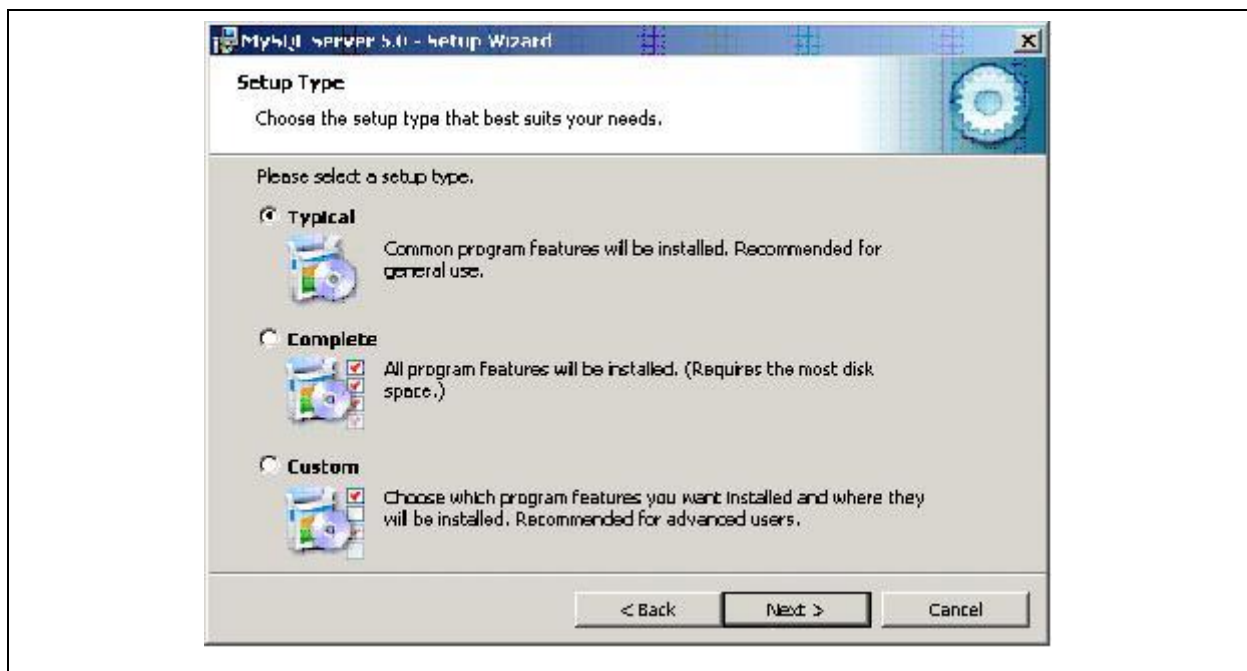


Illustration 1-2: Installation step 2

The upcoming installation steps are now displayed in a window. Click on **Install**, and the Installer will start on the installation of the tasks you have determined. The window shown below will be activated and display the tasks.

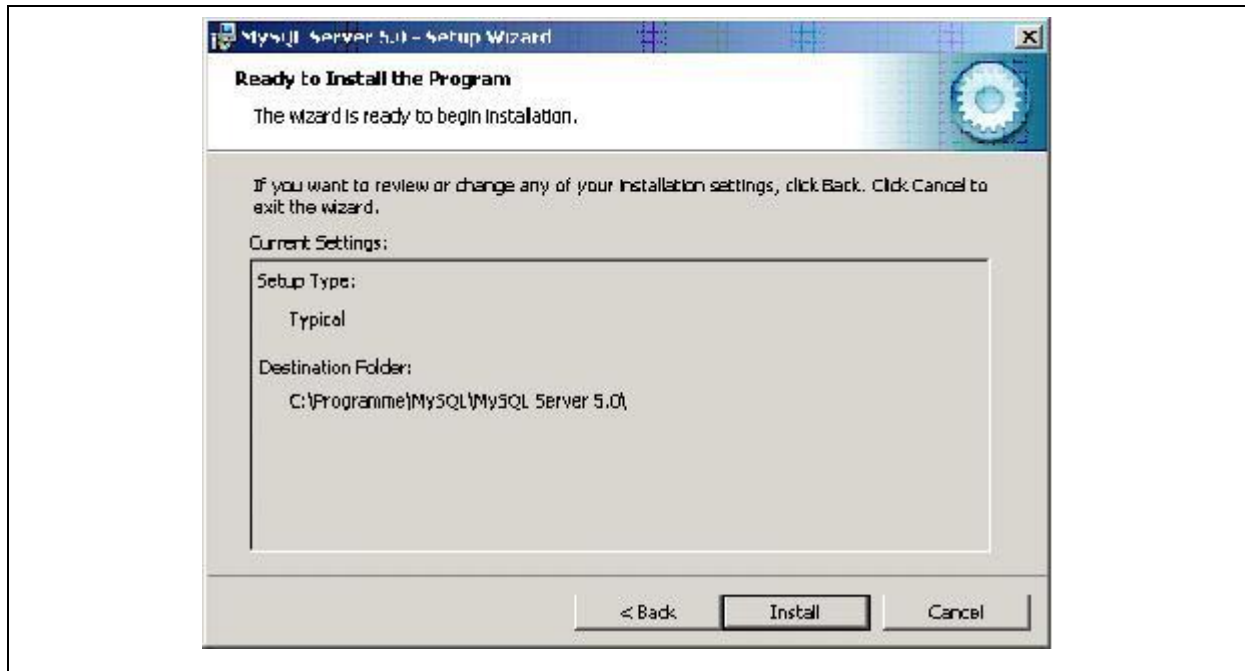


Illustration 1-3: Installation step 3

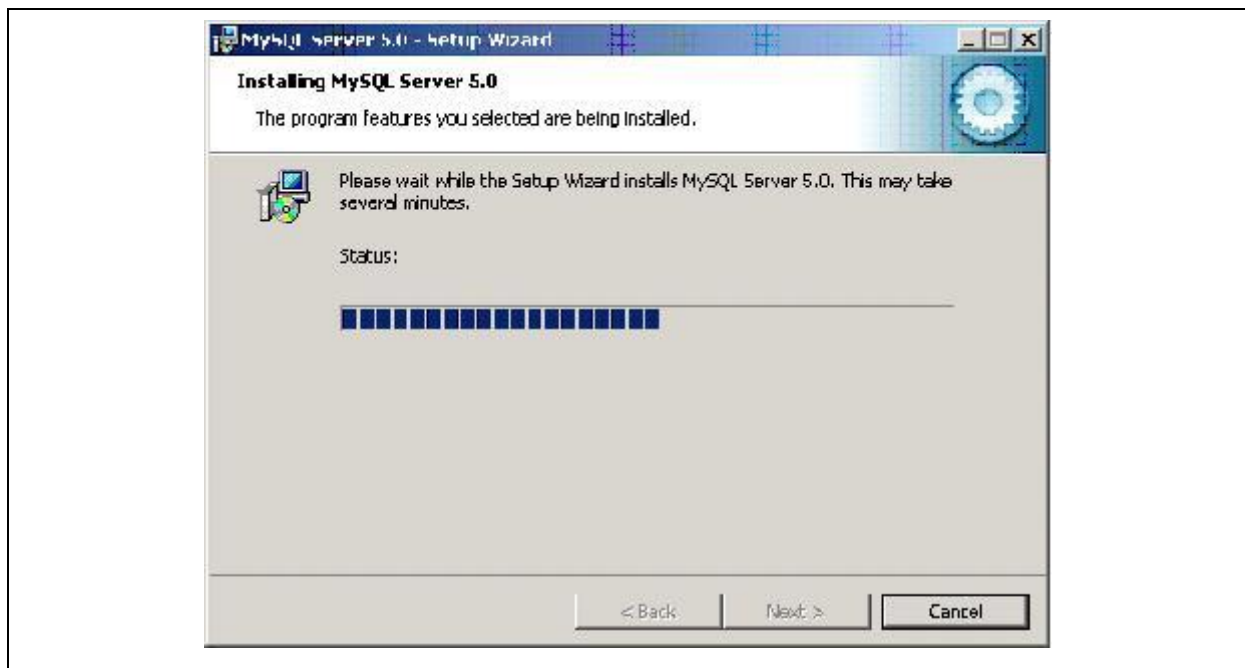


Illustration 1-4: Installation step 4

When the installation has been completed, the window shown below will appear and you will be asked if you intend to establish a user access on the MySQL.com homepage. As such access is not required, click on Skip Sign-Up and then click on Next.

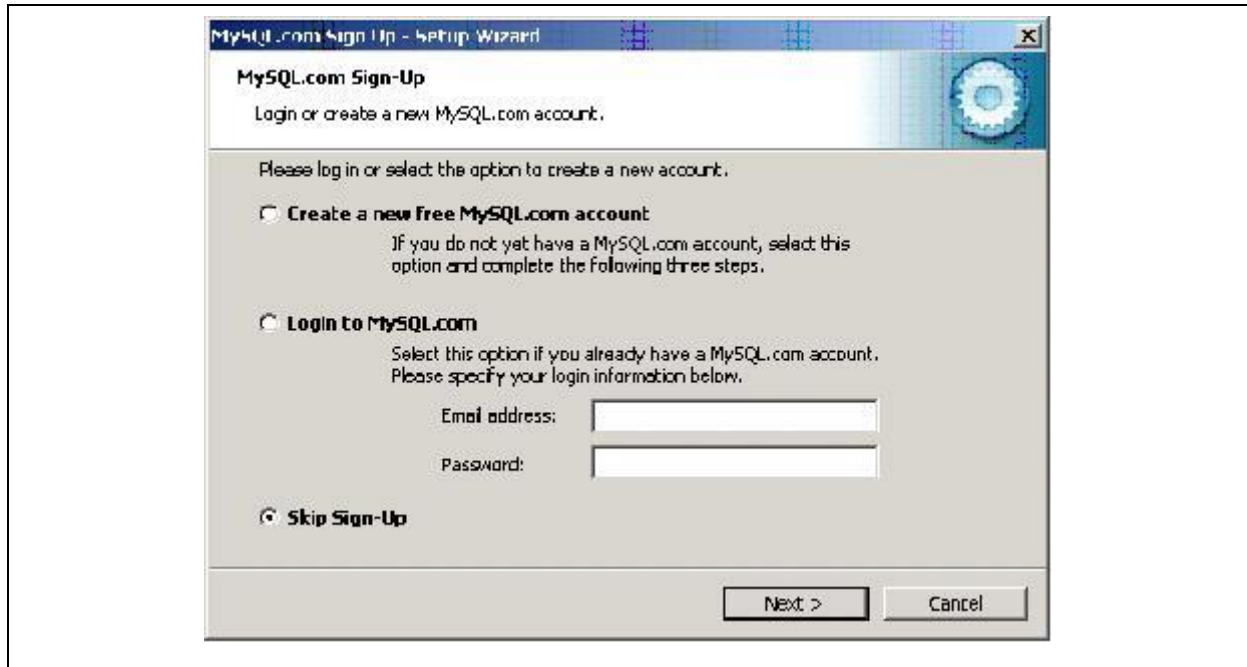


Illustration 1-5: Installation step 5

Now the configuration assistant for the database will open up.

Note!

This step has to be carried out at any rate as otherwise the AZA100 software cannot be configured thoroughly later on and the programme will not run properly.

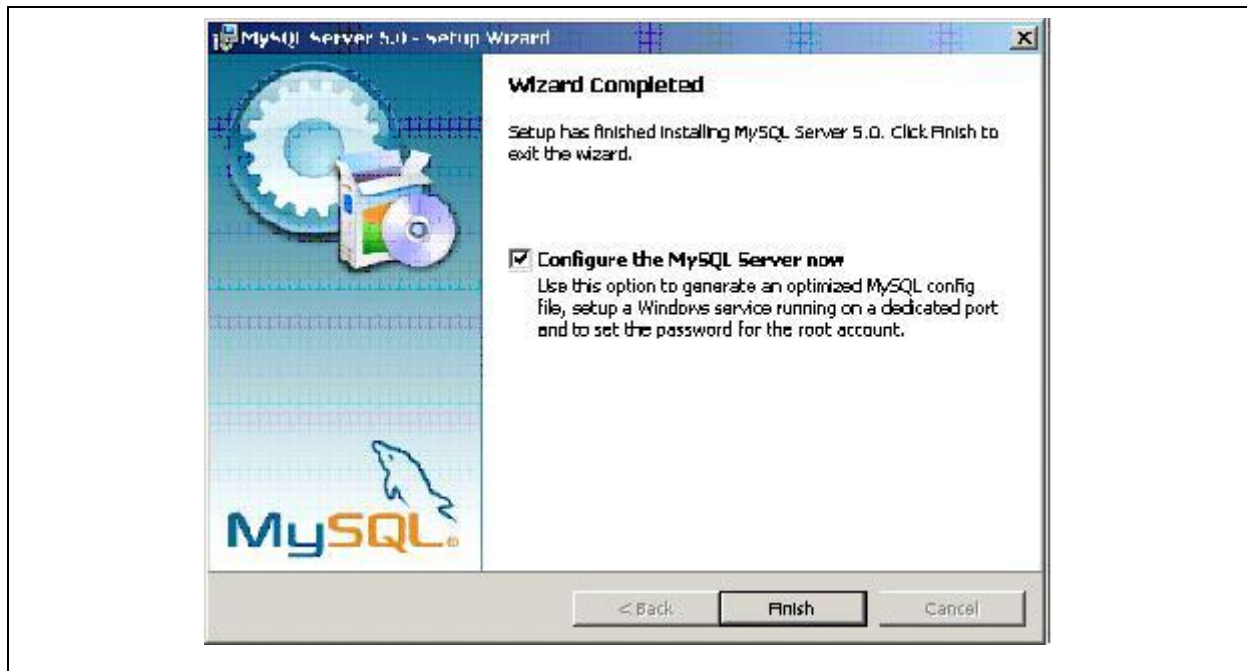


Illustration 1-6: Installation step 6

Therefore, make sure you have ticked the box as shown in the illustration above and confirm by clicking on **Finish**. The configuration assistant will start now to configure the database. Here, as well, click on the **Next** button.

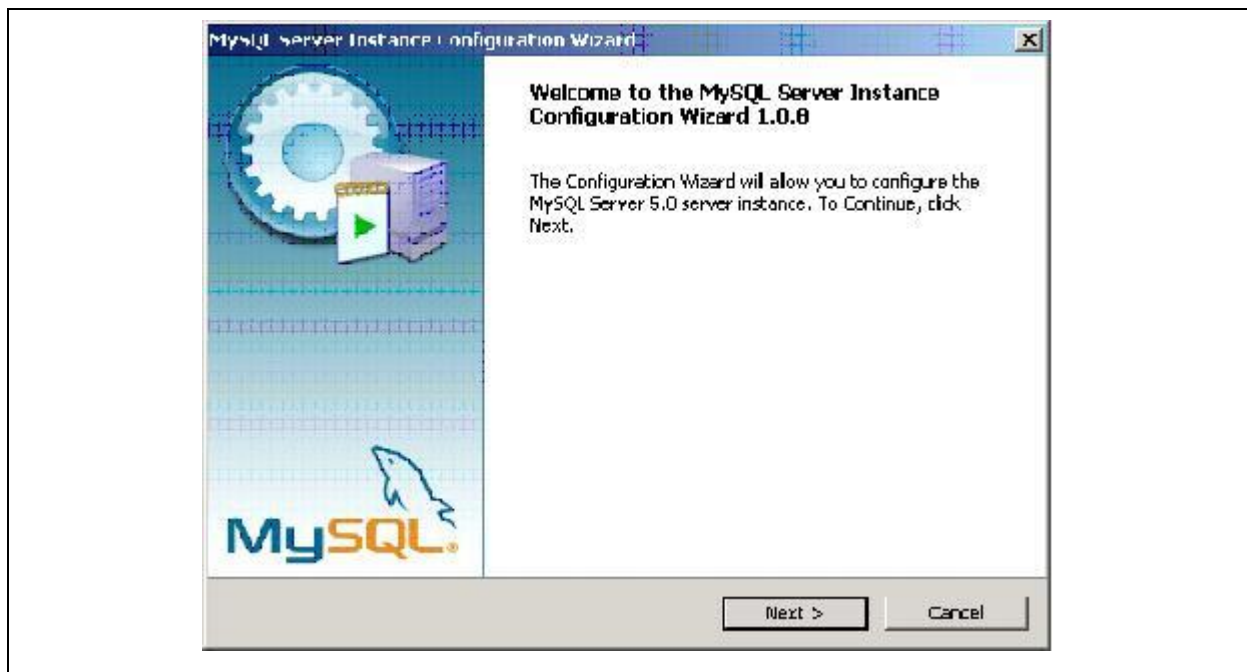


Illustration 1-7: Installation step 7

Note! This installation step has to be carried out at any rate.

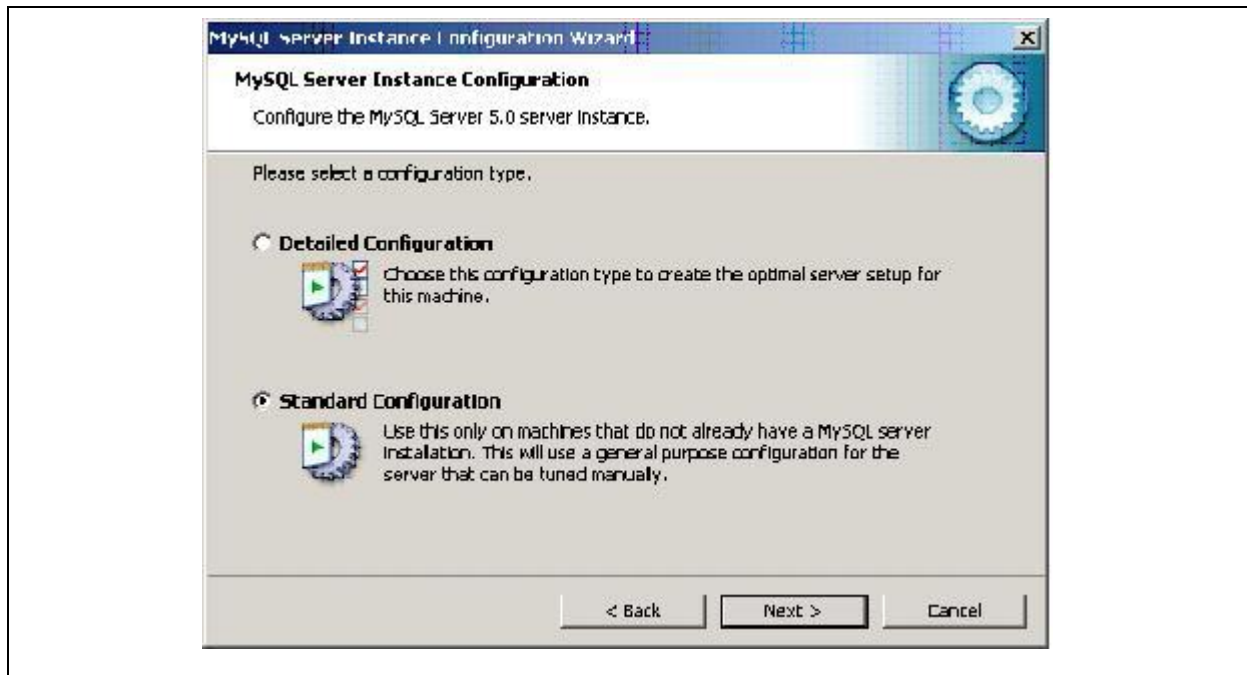


Illustration 1-8: Installation step 8

In the next window, please select **Standard Configuration** and click on **Next**. In the window to appear you will be asked whether or not MySQL is to be installed as a Windows Service.

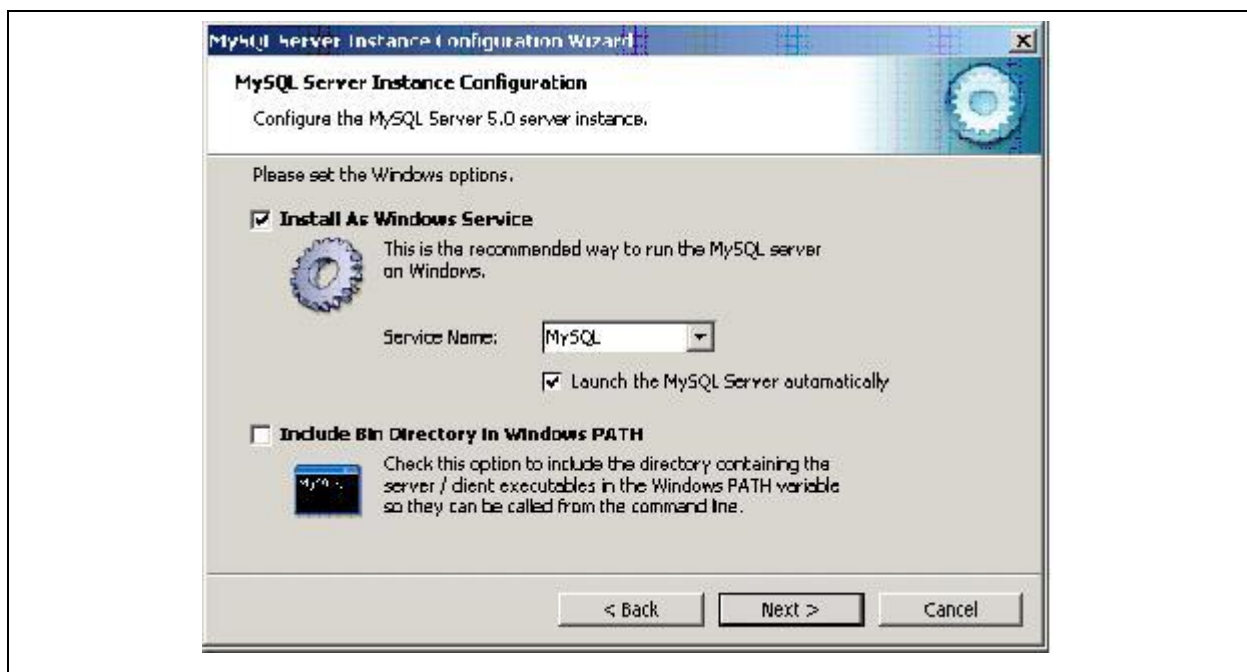


Illustration 1-9: Installation step 9

As the installation of MySQL is absolutely necessary, tick the corresponding box as shown in the illustration below and click on the **Next** button to continue.



Illustration 1-10: Installation step 10

In the next window you will be requested to enter a password for the **root** database user. Please enter this password twice and confirm by clicking on the Next button.

Note!

Please make sure you will remember this password as it will be required later when the AZA100 programme is being installed. If you are not able to enter this password at this later point of time, the AZA100 programme will not run in a trouble-free way [user: root / password: your input].

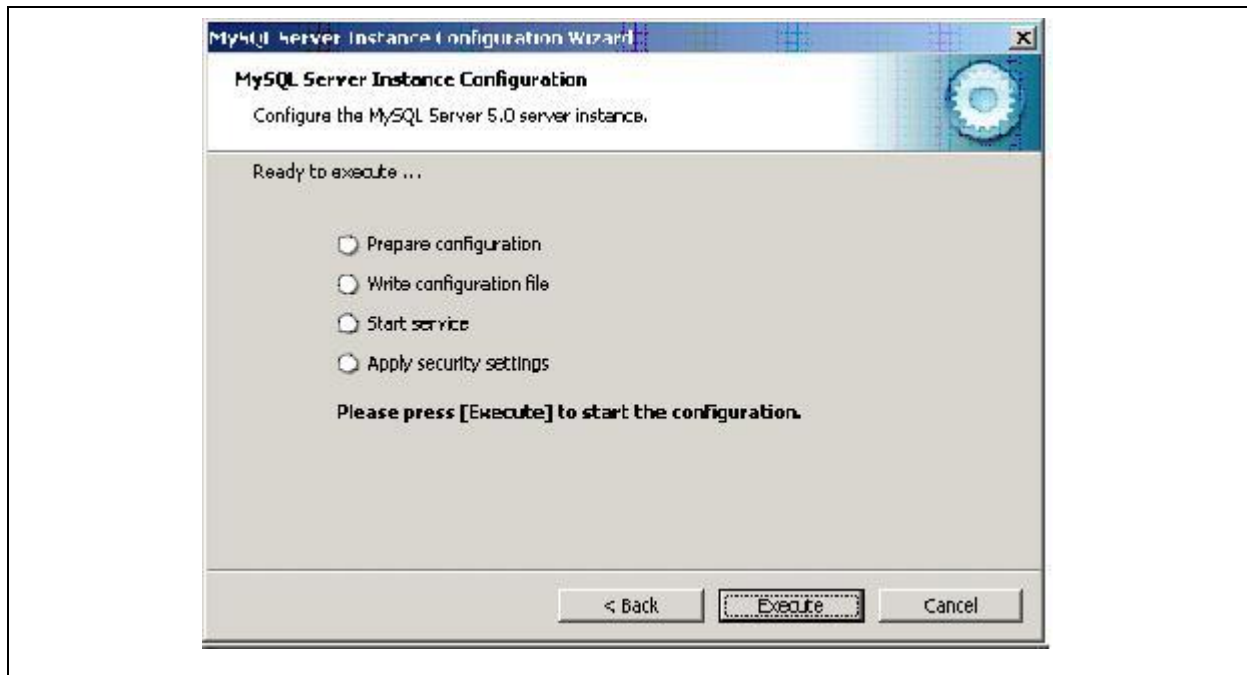


Illustration 1-11: Installation step 11

Once you have completed the above step, the following window will appear. Click on the **Execute** button and the Installer will now adjust the setting on the database. Finally, the Installer will indicate the successful completion of the installation of the single components by means of blue ticks.

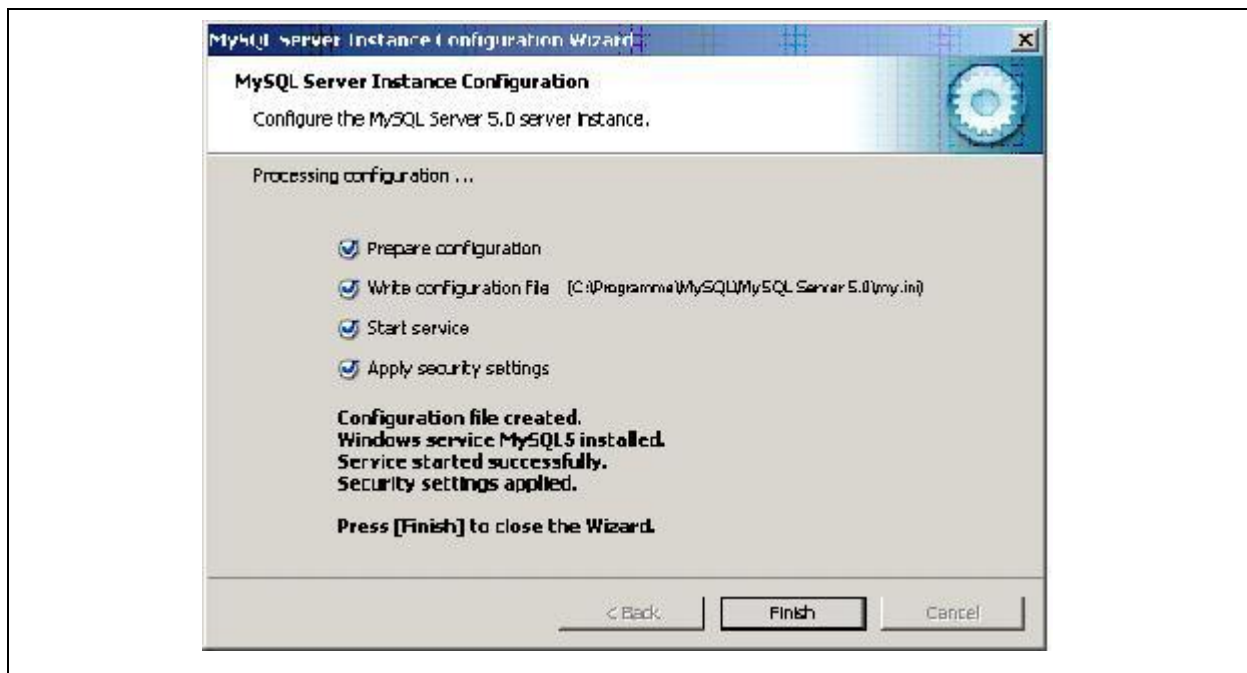


Illustration 1-12: Installation step 12

Note!

If your computer is equipped with a firewall, the installation of the programme might cause problems. Therefore, please make sure that Port 3306 has been cleared for the MySQL programme.

1.2 Installation of the Drulo-Control programme

Programme version 1.0.2.17 or higher does not require any separate installation or any update of the Java Runtime Environment. The installation routine of the Drulo-Control programme automatically detects any Java Runtime Environment and whether or not the installed Java version requires an update. The following sections and graphics are to point out the single steps required for the installation process.

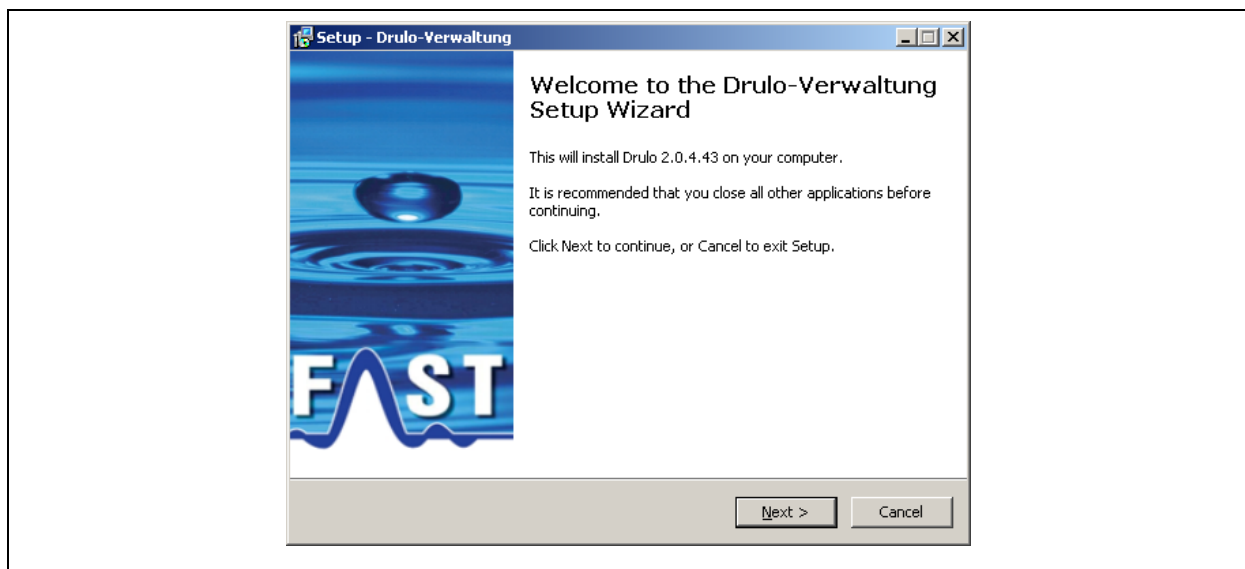


Illustration 1-13: Installation step 1

When the Setup programme has been started, the Welcome dialogue as shown in Illustration 1-13 will appear. Here please click on **Next**. The dialogue as can be seen in Illustration 1-14 will appear now. This dialogue shows you as the end user the licence agreement, which you must accept in order to be able to install the software. Please tick the “accept” box to approve the licence agreement, then click on **Next** to open the next dialogue window.

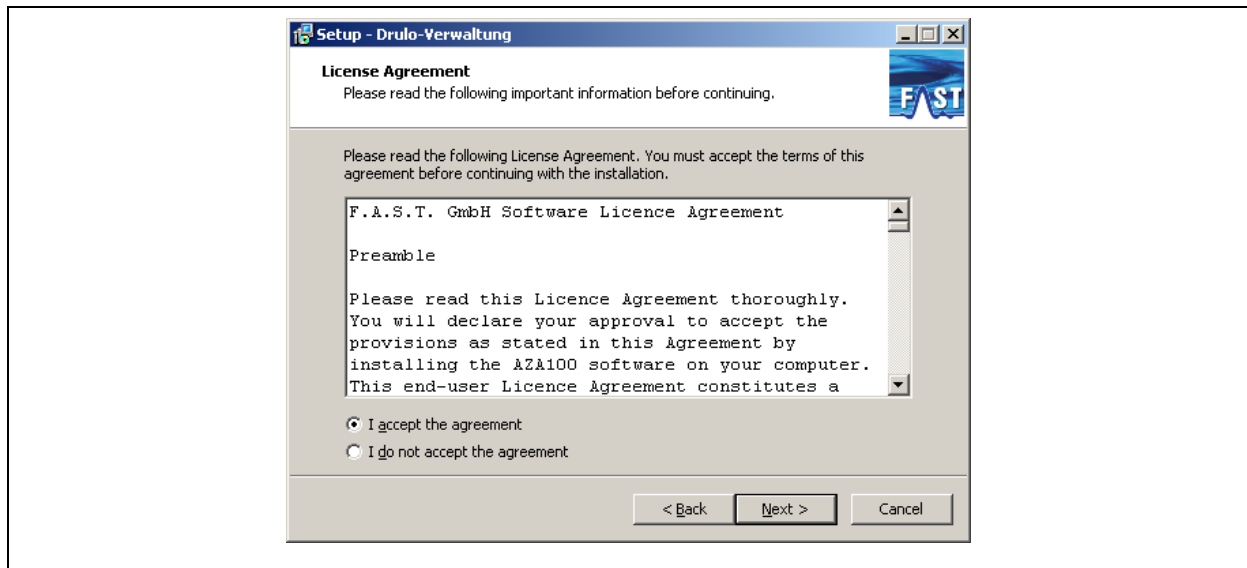


Illustration 1-14: Installation step 2

In this third installation step, the dialogue as shown in Illustration 1-15 will appear. Here you are requested to determine the installation directory of the software by clicking on **Browse** or by entering the path directly. Normally, however, changing the directory suggested by the software is not required. When you have entered all data in this dialogue and click on **Next**, you will be led to the next dialogue.

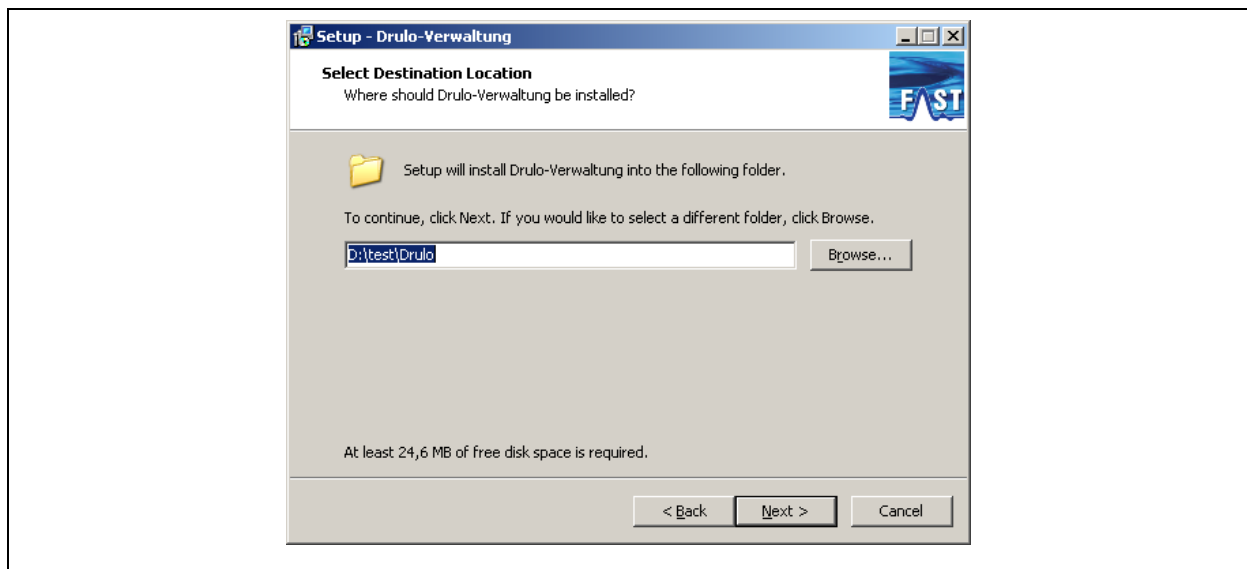


Illustration 1-15: Installation step 3

The new dialogue (see Illustration 1-16) allows you to change the name or the path of the programme group, i.e. the original Windows naming in the **Start** menu. On completion of this step, you will be led to the next dialogue by clicking on the **Next** button.

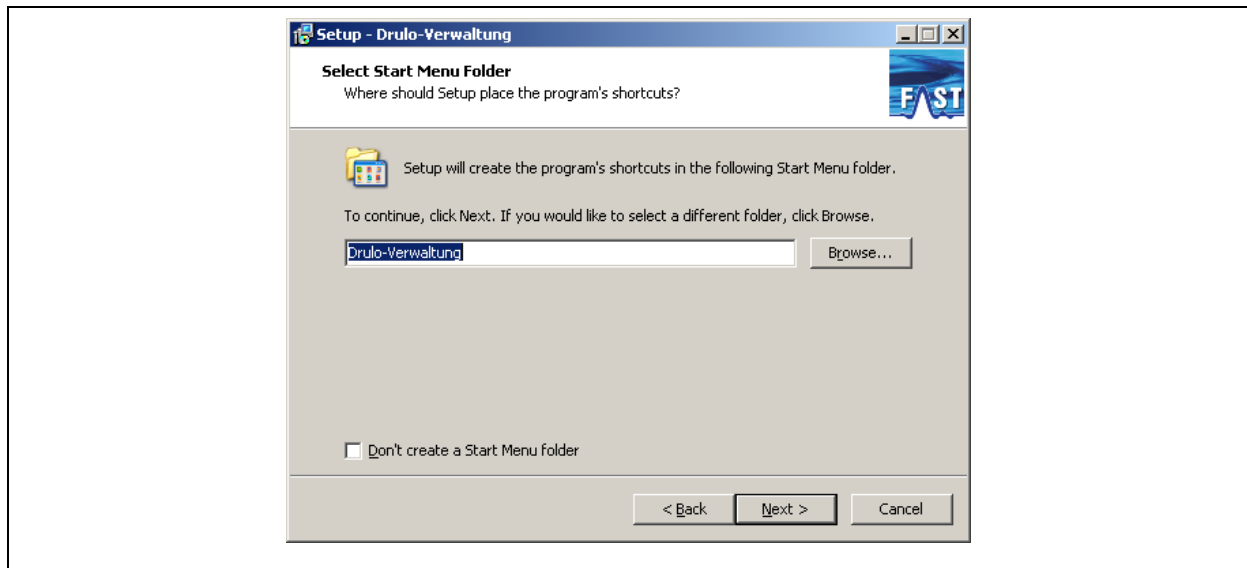


Illustration 1-16: Installation step 4

The next installation step depends on the configuration of your system. If you have not yet installed Java on your system or if the installed Java version is obsolete, the dialogue shown in Illustration 1-18 will appear. In all other cases, the dialogue as shown in Illustration 1-17 will appear.

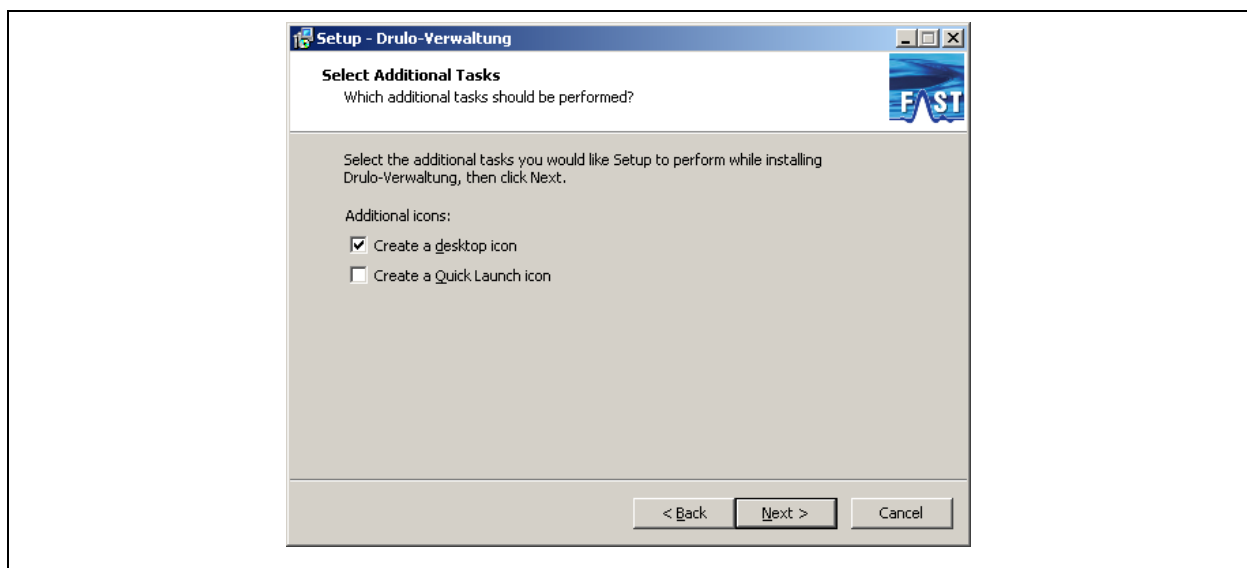


Illustration 1-17: optional Installation step 5 / 1

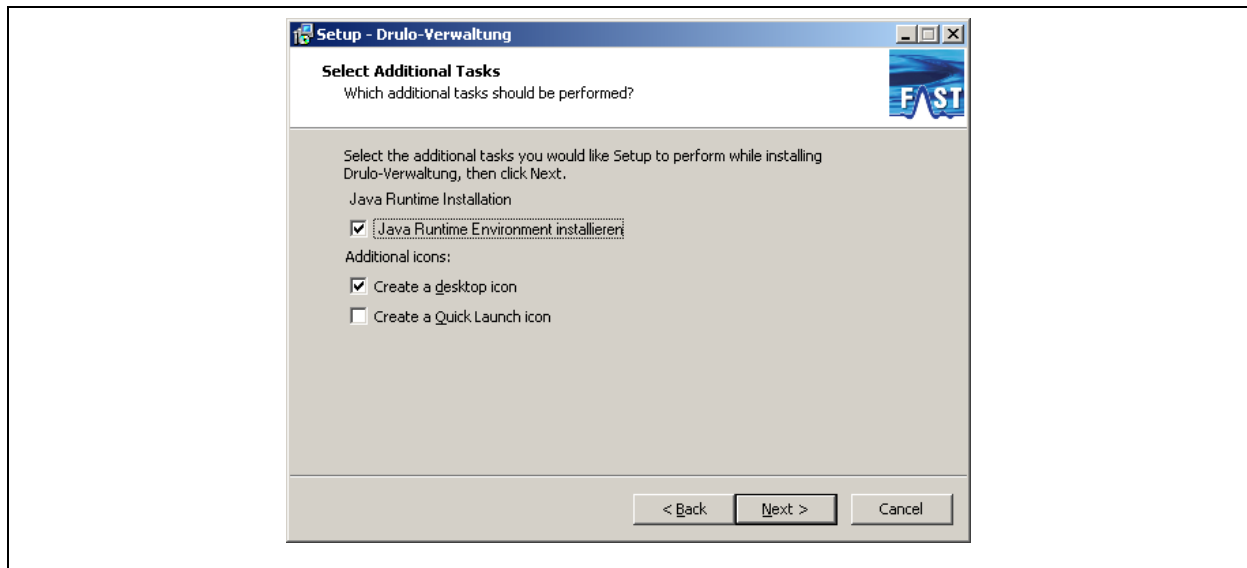


Illustration 1-18: optional Installation step 5 / 2

If the first dialogue (as shown in Illustration 1-18) appears, it is required to tick the `Install Java Runtime Environment` box. This will result in an automatic start of the Java installation routine. When you have completed the setting, click on `Next` for the next dialogue. In the dialogue shown in Illustration 1-19 you click `Install`, to start the installation.

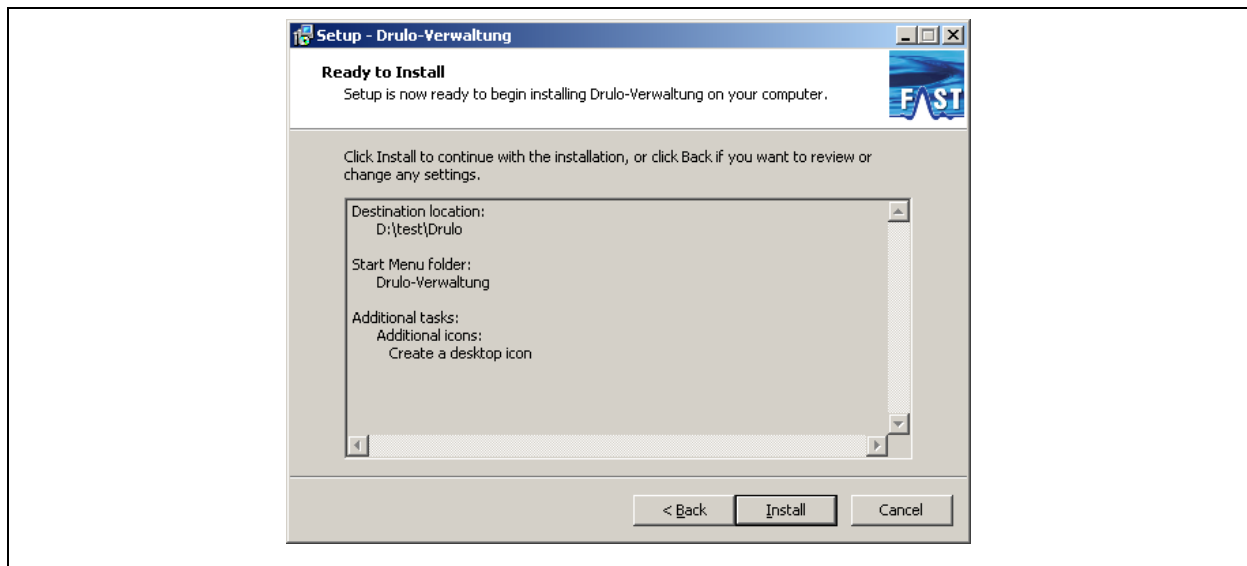


Illustration 1-19: Installation step 6

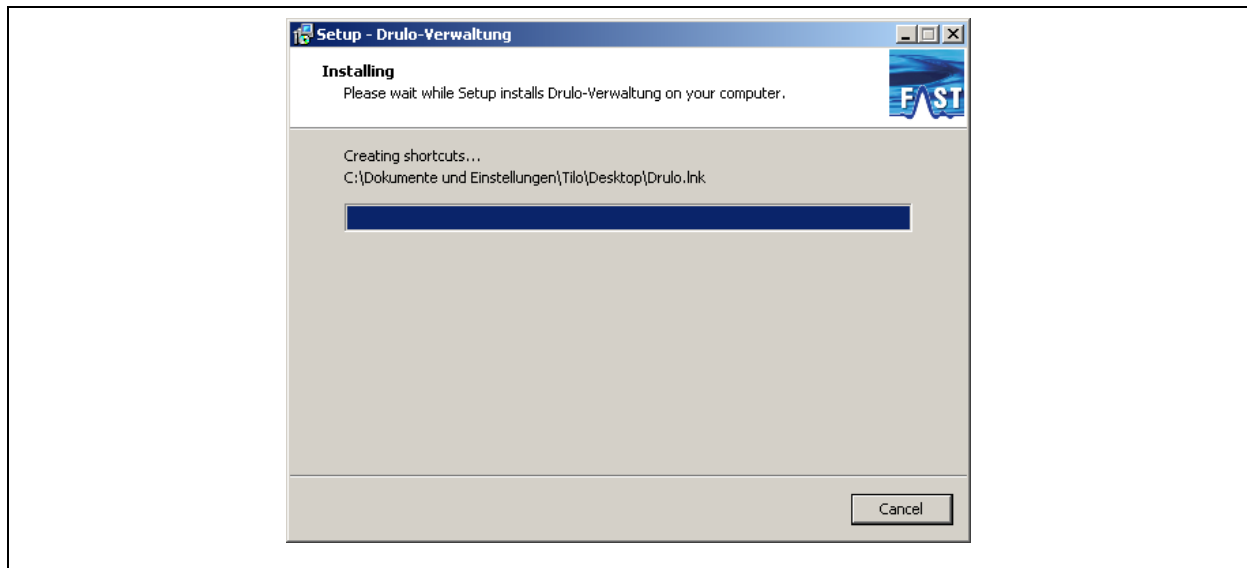


Illustration 1-20: Installation step 7

If it is required to install Java, the Java installation routine will start in installation step seven. This installation routine has to be completed as otherwise the dialogue as shown in Illustration 1-21 will appear and announce the de-installation of the Drulo-Control programme. Note: If you now click on **Next**, the de-installation process for the Drulo-Control programme will start automatically.



Illustration 1-21: Optional completion of installation 1

If the Java installation routine has been completed successfully or if an adequate Java version has been installed on your computer, you will be led to the dialogue as shown in Illustration 1-22.

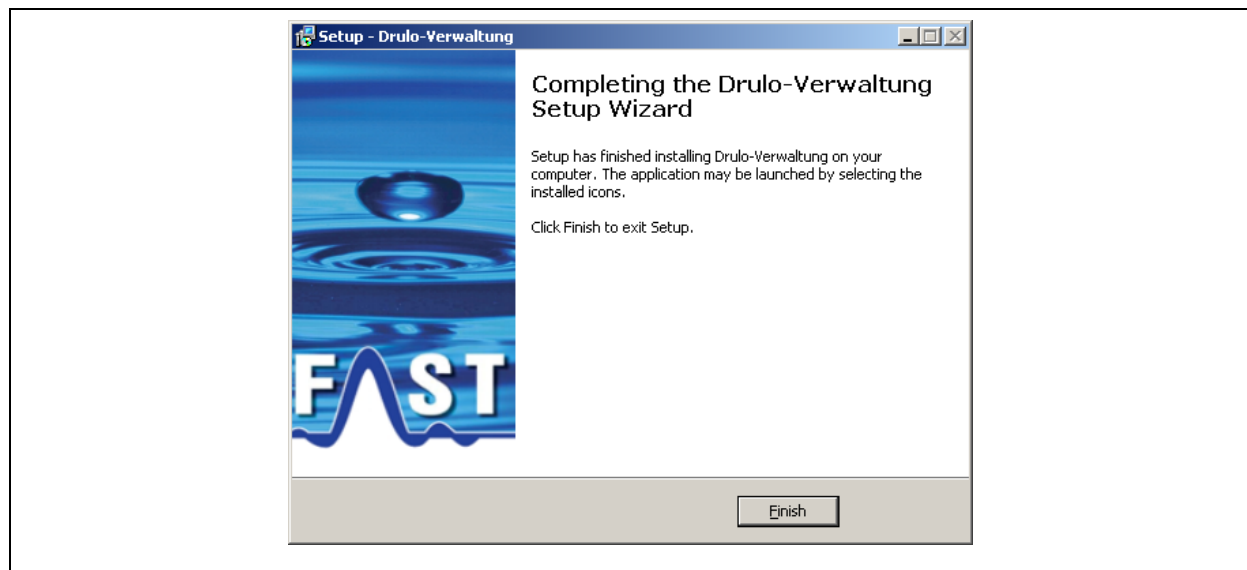


Illustration 1-22: Optional completion of installation 2

As soon as this installation process has been completed, all components required for the utilization of the Drulo-Control programme have been installed and there one icon should appear on your desktop or on the Start menu.