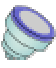







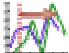
# **“Drulo Control” Operating Instructions**

*Version 1.0.1.2 and higher*



# Contents

<b>Operating Instructions “Drulo Control“ .....</b>	<b>1</b>
<i>Version 1.0.1.2 and higher.....</i>	<i>1</i>
<b>Contents.....</b>	<b>2</b>
<b>List of illustrations .....</b>	<b>4</b>
<b>Contact details .....</b>	<b>5</b>
<b>1 Introduction .....</b>	<b>6</b>
<i>1.1 General information.....</i>	<i>6</i>
<i>1.2 Overview of chapters.....</i>	<i>6</i>
<b>2 Programme design.....</b>	<b>7</b>
<i>2.1 Menu.....</i>	<i>7</i>
<i>2.2 Menu bar .....</i>	<i>7</i>
<i>2.3 State bar .....</i>	<i>8</i>
<i>2.4 Fields.....</i>	<i>8</i>
2.4.1 Pressure logger and measurements .....	8
2.4.2 Measurement curve .....	9
<b>3 Functionality of the menu.....</b>	<b>11</b>
<i>3.1 Files.....</i>	<i>11</i>
3.1.1 Close programme .....	11
<i>3.2 Settings .....</i>	<i>11</i>
3.2.1 Language .....	11
3.2.2 Communication .....	12
3.2.3 Database .....	13
<i>3.3 Menu bar .....</i>	<i>16</i>
3.3.1 Reading out pressure logger data  .....	16
3.3.2 Setting the time of the pressure logger  .....	17

3.3.3 Programming the measurement 	17
3.3.4 Printing out the selected measurement 	20
3.3.5 Exporting into Excel 	22
3.3.6 Deleting a measurement 	22
3.3.7 Eclipsing measurement curves 	22
<b>4 Programme functions.....</b>	<b>24</b>
<i>4.1 Pressure logger and measurements .....</i>	<i>24</i>
<i>4.2 Measurement curve .....</i>	<i>26</i>
4.2.1 Detailed view.....	26
4.2.2 View of eclipsed curves .....	29
4.2.3 Additional information.....	31

# List of Illustrations

Illustration 2-1: Files .....	7
Illustration 2-2: Settings .....	7
Illustration 2-3: Menu bar .....	8
Illustration 2-4: State bar .....	8
Illustration 2-5: Pressure logger and measurements .....	9
Illustration 2-6: Measurement curve.....	10
Illustration 3-1: Dialogue for interface settings.....	13
Illustration 3-2: Settings -> Database.....	13
Illustration 3-3: Database Assistant.....	14
Illustration 3-4: Database message .....	14
Illustration 3-5: Database error 1 .....	15
Illustration 3-6: Database error 2 .....	16
Illustration 3-7: Settings of the pressure logger .....	17
Illustration 3-8: Programming of measurements.....	18
Illustrations 3-9: Measurement-related parameters.....	19
Illustrations 3-10: Print-out dialogue .....	21
Illustration 3-11: Print-out dialogue menu bar .....	21
Illustration 3-12: Export dialogue .....	22
Illustration 3-13: Selection of the measurement curves.....	23
Illustration 4-1: Pressure logger and measurements .....	24
Illustrations 4-2: Dividing the measurement curve into sections.....	27
Illustration 4-3: Determining the difference in pressure.....	28
Illustration 4-4: Eclipsing measurement curves.....	29
Illustration 4-5: Marking the sections to be exported.....	30
Illustration 4-6: Additional information .....	31

## Contact Details

Firma

F.A.S.T. GmbH

Boessingerstr. 36

D-74243 Langenbeutingen, Germany

Contact: Mr Tilo Behrmann

Tel: +49 - 7946-92100-25

Fax: +49 - 7946-7153

E-Mail: [info@fastgmbh.de](mailto:info@fastgmbh.de)

[Behrmann@fastgmbh.de](mailto:Behrmann@fastgmbh.de)

Web: [www.FastGmbH.de](http://www.FastGmbH.de)

# **1 Introduction**

## **1.1 General Information**

Pipeline networks designed to supply vital goods such as drinking-water require special and very thorough monitoring. The pressure values gathered reveal important information about the fire safety and about the supply reliability of such a supply network. Guaranteeing supply reliability even during peak times requires prior measurements to be carried out with pressure loggers.

Pressure loggers are mounted at several spots at the pipeline section. Simulating consumption leads to a situation of different pressure levels, and the pressure pattern on the particular pipeline section reveals information about the condition of the pipe. Graphical editing and comparability of the measurement-related data is reasonable to provide the user with an overview of the pressure situation found at the single pressure logger locations.

F.A.S.T GmbH has developed the DRULO software to support the user by evaluating the measurement-related data acquired by the receiver. Due to the software, pressure loggers can also be programmed for certain measurement purposes. For the user's convenience, the acquired measurement-related data can be displayed as a curve, if requested. In addition, the software features a function that enables the user to eclipse different measurement curves and to export entire measurements into Excel for further processing.

## **1.2 Overview of Chapters**

This manual has four chapters. First, the Introduction, followed by the chapter Programme Design. The third chapter is to provide information on the single menus and on the particular sub-menus. Chapter four lists all the functions available in the various programme fields.

## 2 Programme Design

### 2.1 Menu

In order to control the single functions of the programme, there are two different menu options available. One option is the "File" menu, and the other one is the "Settings" menu. If you want to close the programme, go to "File" or press "STRG" + „E“. Illustration 2-1 below shows the extended menu.



Illustration 2-1: Close file

Several features of the Drulo Control programme, e.g. the language (Illustration 2-2), can be changed in the "Settings" menu.



Illustration 2-2: Settings

Furthermore, the serial interface is configured in this menu, and the database can be set up with the Database Assistant. For further details, please refer to section 3.2.

### 2.2 Menu Bar

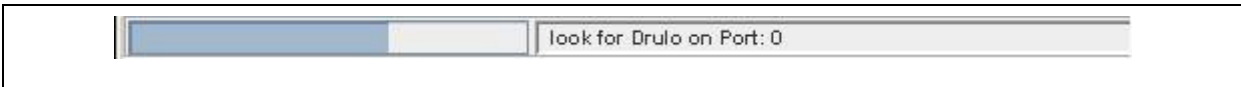
The menu bar below the "Files" und "Settings" menus offers further functions. However, the usable functions are context-related and thus only available for certain constellations. When certain functions cannot be used due to the particular context, these deactivated functions will be shadowed in grey in the menu bar. Illustration 2-3 below shows the menu bar. For further information on the single functions, please refer to section 3.3.



**Illustration 2-3: Menu bar**

### 2.3 State Bar

The state bar informs the user about the progress made by the particular functions called. On the one hand, the user will see a written description of the tasks done and on the other hand, on the left- hand side, the user can see the progress made displayed in a graphical way.



**Illustration 2-4: State bar**

### 2.4 Fields

There are two fields offering different functions in the Drulo Control programme. These two fields are “Pressure Logger and Measurements“ and “Measurement Curve“. The particular functions of each field are context-related and thus only available for specific constellations.

#### 2.4.1 Pressure Logger and Measurement

This is the part of the programme where the measurements saved in the database and the pressure loggers connected to the read-out board as well as the latest measurements are displayed (Illustration 2-5). The user will receive detailed information on a particular measurement or a pressure logger by selecting this measurement or logger. This information will then be displayed below the field “Pressure Logger and Measurements“ and can be used as additional information on the selected object (Table 2-1).

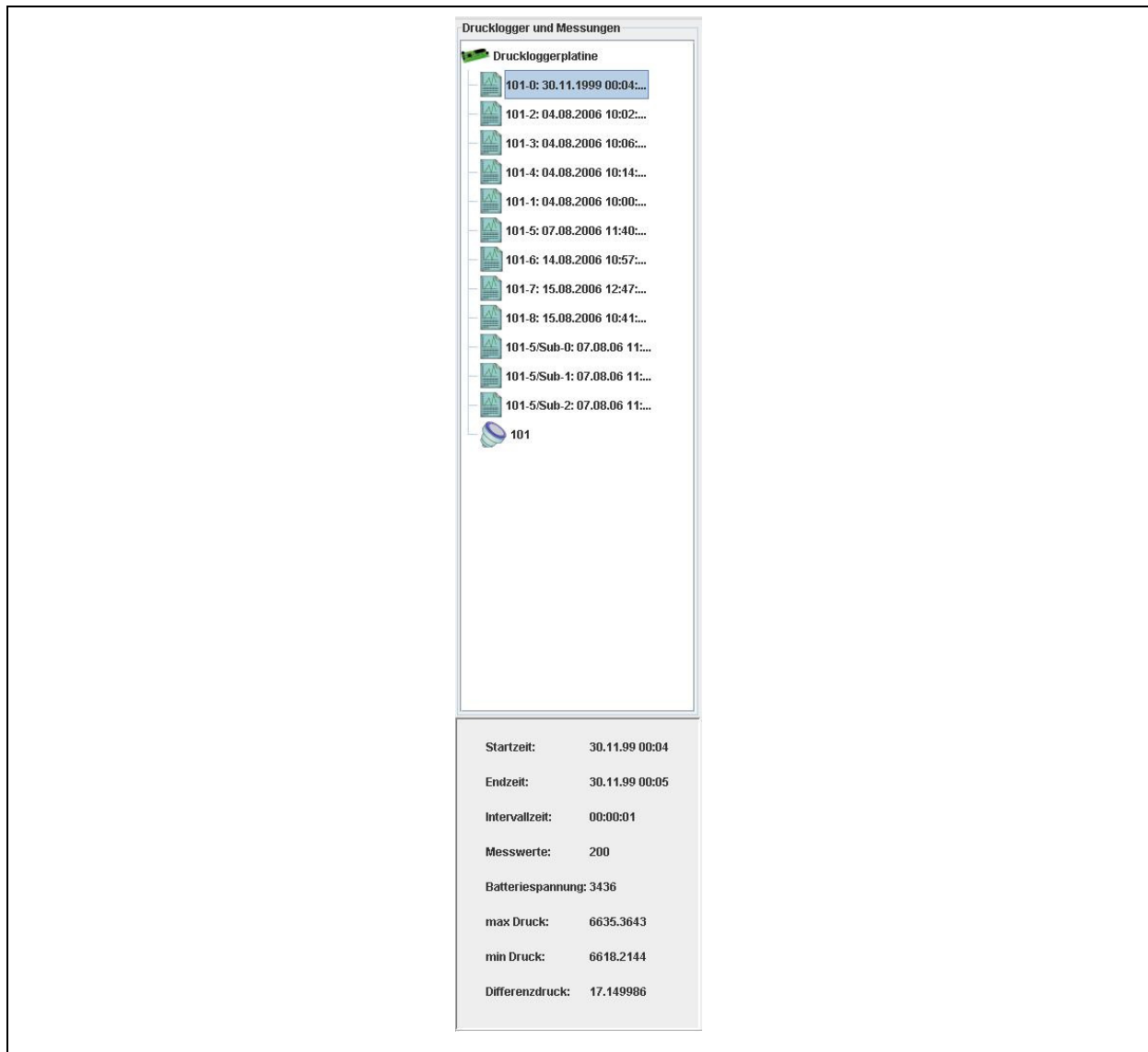
When an object is selected in this field, the context-related functions of the menu bar will be activated (section 2.2). When a pressure logger is selected, the buttons 1 through 4 (Illustration 2-3) will be activated, and when a measurement is selected, the buttons 4 through 6 will be activated to provide the user with extended functions. For further information on the single functions, please refer to section 3.3.

Measurement	Pressure Logger
start	serial no.
end	measurement values



intervals	software version
measurement values	pressure sensor
battery voltage	calibration
maximum pressure	battery voltage
minimum pressure	
difference in pressure	

**Table 2-1: Additional information**



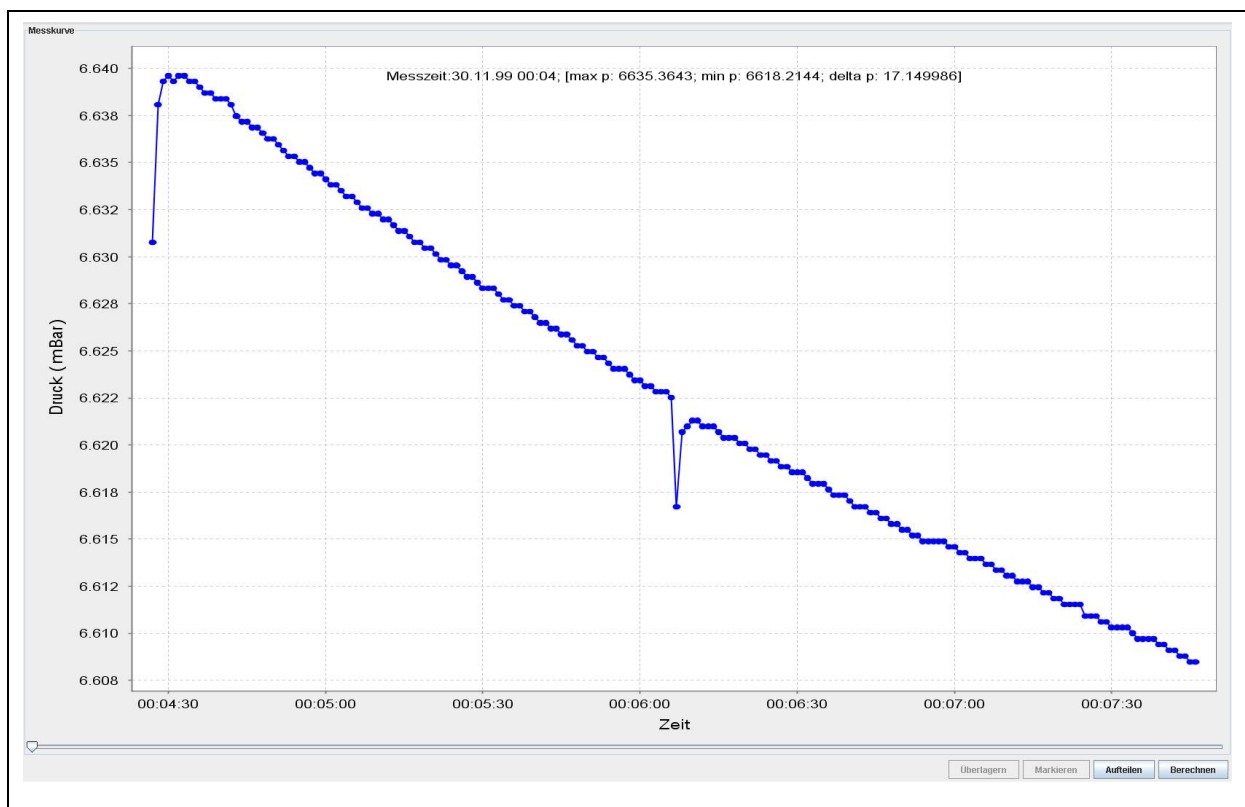
**Illustration 2-5: Pressure Logger and Measurement field**

## 2.4.2 Measurement Curve

The “Measurement Curve“ field displays the values acquired by the pressure loggers as a line diagram, with the Y-axis showing the pressure at the particular measuring spots on the time/X-axis (Illustration 2-6). The time unit is hours, minutes, and seconds (HH:mm:ss). If

several curves are to be eclipsed, the time unit can also be set to months or even years according to the intervals of the single measurements.

Further functions of this section can be activated through the buttons as shown in Illustration 2-6. When you are looking at a single curve and intend to divide this particular curve into several curves or to determine the difference between the minimum pressure and the maximum pressure of a measurement, go to the “Divide“ and “Determine“ buttons respectively. Even several diffusing curves can be eclipsed and marked through the “Eclipse“ and “Mark“ buttons respectively, and certain data sections can be selected and exported to Excel. For further information on the single functions of this field, please refer to Chapter 4.



**Illustration 2-6: Measurement curve**

## 3 Menu Functionality

Chapter 3 is to explain the single menus and their submenus in detail. Chapter 3.1 starts with the functions available in the "File" menu, Chapter 3.2 then deals with the "Settings".

### 3.1 Files

#### 3.1.1 Close the Programme

Select "Close" from the "Files" menu or press "STRG" + "E" to close the programme. The measurements do not need to be saved separately as the programme saves them automatically. Only those measurements showing a red exclamation mark are not saved due to a read-out error.

### 3.2 Settings

#### 3.2.1 Language

You can select the desired language for all texts at "Settings" -> "Language". The software supports up to nine languages as shown in Illustration 2-2. As soon as the programme has been installed, English and German are available immediately as these two languages have been firmly integrated into the programme and cannot be deleted.

Consequently, you can only select English or German in the "Language" menu. If you want to select another language, a so-called language file has to be created beforehand. For your support, the programme generates a template for the language file in the "long" folder while the programme is being installed. The "long" folder is located in the setup directory of the Drulo Control programme. For example, if you have installed the programme at "C:\Programmes", the setup directory of the programme will be found at "C:\Programmes\Drulo" and the template for the language file will be found at "C:\Programmes\Drulo\long".

Once you have opened the "long" folder, you will see the template called "Language.properties". This file can be opened and edited either with the "Editor" programme or with the "Wordpad" programme. However, before you start editing the file, you will have to make a copy of the "Language.properties" file and save this copy file in the folder as the original template must not be changed to prevent programme errors. **So please never change the template, always change the copy only.**

You can create a copy of the file by clicking on and marking the file with the left mouse key. Then move the cursor across the marked file and press the right mouse key to open a so-called pop-up menu. Select "Copy" and press the left mouse key again. Make sure that you insert the copy into the same folder by going to "Edit" and selecting "Insert". You should now have another language file in the "long" folder called "Copy of Language.properties". This copy can now be adapted to your language.

When the language has been adapted, the name of the language file has to be adapted so that the programme can identify and load the file. Please rename the copy of your language file ("Copy of Language.properties") according to the following convention:

- French -> "Language\_fr\_FR.properties"
- Spanish -> "Language\_es\_ES.properties"
- Italian -> "Language\_it\_IT.properties"
- Danish -> "Language\_da\_DK.properties"
- Norwegian -> "Language\_no\_NO.properties"
- Swedish -> "Language\_sv\_SE.properties"
- Portuguese -> "Language\_pt\_PT.properties"

### **3.2.2 Communication**

You have to determine the kind of data transfer in the "Settings" -> "Communication" menu. The configuration has to be called ("Settings" -> "Communication" -> "serial") through the serial interface before the data of the pressure logger can be read out.



**Illustration 3-1: Dialogue for the interface settings**

The “Com1“ Port is selected as an ex works standard. Select the appropriate Com-Port which the AZ-100 receiver is connected to. All other settings usually do not need to be changed. When you have changed all the required settings for the Com-Port, you can accept the changes by clicking on ”Save“. The pressure logger can then be read out as described in section 3.3.1.

### 3.2.3 Database

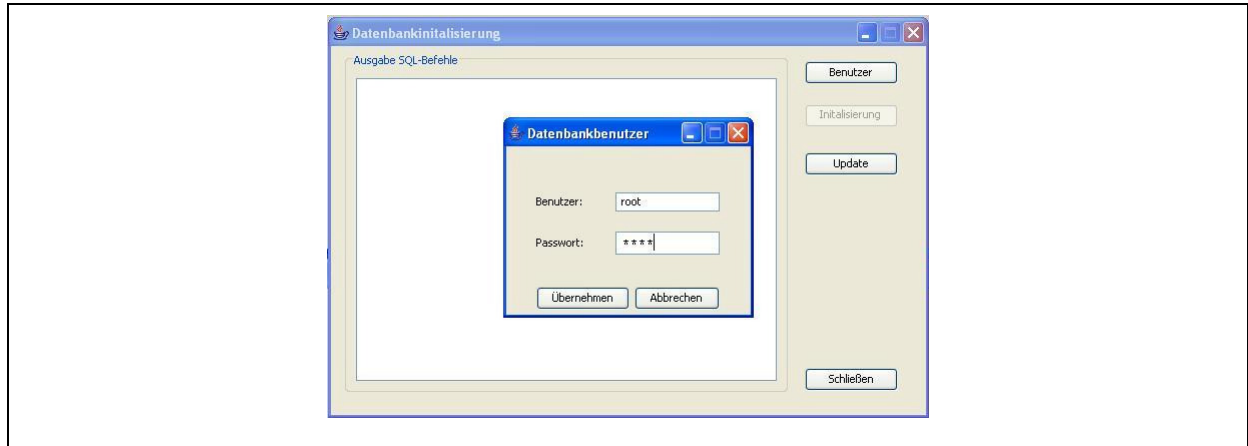
Start the Assistant at “Settings“ -> „Database“ (Illustration 3-2). The main window of the Assistant will open up.



**Illustration 3-2: Settings -> Database**

## Initialising the Database

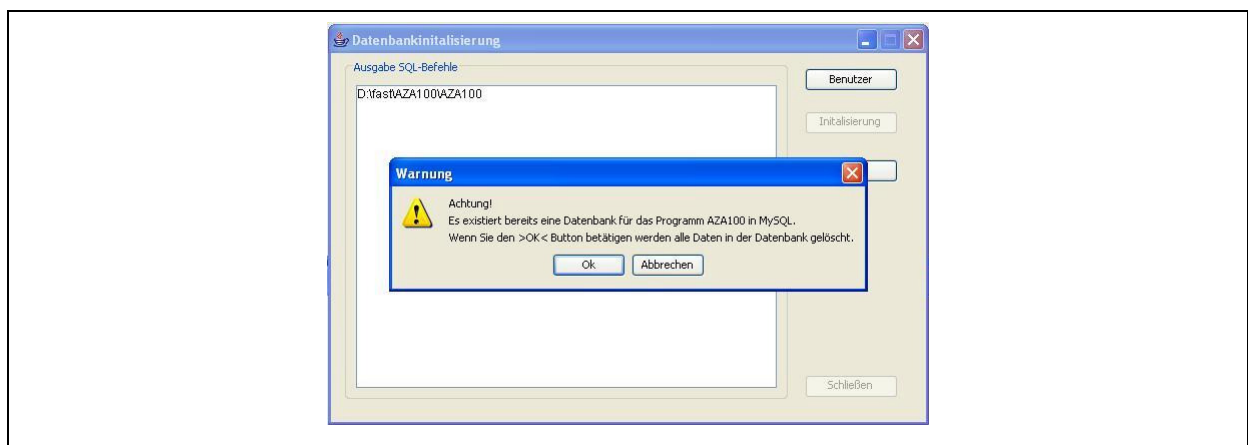
Click on the “User” button to enter the username and the keyword for database access (Illustration 3-3).



**Illustration 3-3: Database Assistant**

In order to initialise the database, please click on the “Accept” button and then on “Initialisation”. This will start the creation of the tables (Illustration 3-3). If you do not want to initialise the database, click on “Cancel” and then on “Close”.

**Note:** Any existing data in the database will be deleted when you start the initialisation process. Therefore, initialise the database only once after the software has been installed. If , at a later point of time, the database is updated, the data saved in the database will not be deleted.



**Illustration 3-4: Database message**

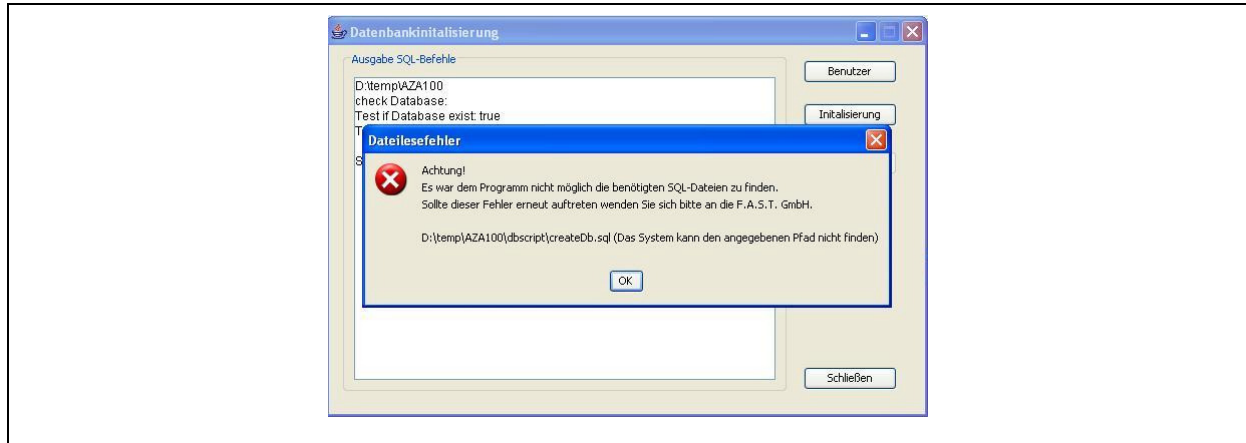
If the database exists already, confirm the message by clicking on "OK" to continue with the Assistant. Please note, that all data saved in the database will be deleted. If, however, you want to cancel the database initialisation at this point, click on "Cancel".

## Updating the Database

Sometimes it is necessary to update the database when the entire programme has been updated. In this case, the Database Assistant will provide the functions required for the database update. If a programme updates has generated the message that the database has to be updated, the database update has to be started through the "Update" button as shown in Illustration 3-3. It is not required for a database update to key in the username or the keyword for the database. Also, there will be no data deleted during a database update.

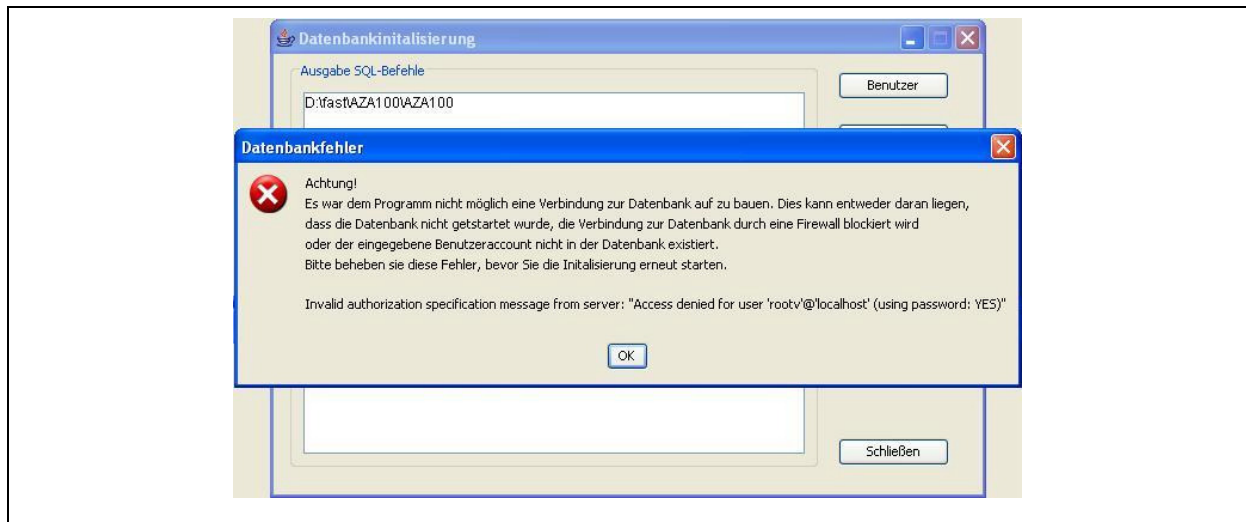
## Possible Errors occurring during the Update Process

The Assistant does not find the appropriate path. Please check whether or not the stated paths exists (Illustration 3-5). If the path does not exist, you will have to install the Drulo Control programme again or contact F.A.S.T. GmbH.



**Illustration 3-5: Database error 1**

The Assistant could not establish a connection to the database. A possible reason may be an incorrect keyword, or the "MySQL" service was discontinued or incorrectly started, or the database is blocked by a firewall (Illustration 3-6).



**Illustration 3-6: Database error 2**

Please check if you have entered the correct keyword and if "MySQL" has been started. If you have installed a firewall, please keep this firewall deactivated during the entire update process.

### 3.3 Menu Bar

The following chapter is to explain the single functions available in the menu bar. Similar to the functions as described in chapter 2.2, availability of the functions depends on the object selected through "Pressure Logger and Measurements" (chapter 2.4.1). The functions "Read out the pressure logger" and "Eclipse measurement curves" are not subject to a certain context and are available permanently.

#### 3.3.1 Reading out the Pressure Logger

Select this function when you intend to read out a pressure logger. Please note that this function will not work properly unless at least one pressure logger has been connected to the read-out board, the read-out board has been connected to the computer, and all relevant drivers have been installed. Furthermore, the Com-Port has to be configured as described in section 3.2.2 before the logger is read out for the first time. As soon as the appropriate Com-Port has been set, the pressure loggers will be read out when this function is called. The data is displayed in the "Pressure Logger and Measurements" field. The read-out process is indicated in the status bar (chapter 2.3).



### 3.3.2 Setting the Time of the Pressure Logger

Similar to the "Read out the Pressure Logger" function, this function demands a certain configuration of the devices involved: a pressure logger has to be connected to the computer and the Com-Port must have been set when this function is called for the first time. Clicking on the "Setting the time of the pressure logger" button will then open a new window where the time and the date for the pressure logger can be input. Once the requested data has been input, click on "Save" to make sure that the selected information is transferred to the pressure logger. If you want to cancel the information input, click on "Cancel". If you use a read-out board capable of reading out up to eight pressure loggers simultaneously, you can tick the "Synchronize Pressure Loggers" button and synchronize all pressure loggers which are connected to the board. This means that the time and date set will be transmitted to and saved by all the loggers connected.



Illustration 3-7: Settings of the pressure logger

### 3.3.3 Programming the Measurement

This function enables the user to program the pressure loggers with up to five measurements. These measurements can then be read out with the Drulo Control programme. Please note that the pressure logger is equipped with a ring buffer featuring a memory capacity of up to 240,000 measurement values. Old values are overwritten as soon as the limit of 240,000 values is exceeded. The measurements saved currently and the corresponding measurement values are displayed in the "Measurement Programming" window (Illustration 3-8) below the table containing the measurements to be programmed. It is necessary to keep the pressure logger and the read-out board connected to the computer during the entire programming process.

## Setting the Measurement Parameters

The left-hand part of the window (Illustration 3-8) shows a calendar indicating the present month. The calendar also provides the timetable for the setting of the dates for the particular measurements. Just move the cursor to the desired date on the calendar and shadow the particular day by clicking on the left mouse key.

Startzeit	Messwerte	Intervallzeit	Wiederholung
25.08.2006 - 14:20:09	2	0:0:10	0

Drucke Messungen: 12 Messwerte: 224514 ☒ alle Messungen anzeigen

Wiederholungen: ☒ täglich ☐ wöchentlich  Anzahl

Übernehmen Hinzufügen Löschen Schließen

**Illustration 3-8: Programming a measurement**

When a date has been selected, click on the “Add” button (Illustration 3-8) to open the window as shown in Illustration 3-9 to input the parameters relevant for the particular measurement. The date selected for the start of the measurement is displayed in the upper part of the “Measurement Parameters” window. The “Starting time” box allows you to modify the time when the measurement is to be started. Just click on the figure to be reset (hour, minute, or second) so that the cursor is positioned in the middle of the list of numbers for the hour, the minute, and the second respectively. Then scroll up or down with the arrow keys at the right-hand side of the box.

The same procedure is required to change the parameters in the “Finishing Time” (date and time) and “Interval” (time between two measurements) lines. Concerning the intervals this means that the higher the interval time is set, the fewer measurement values will be available for a certain fixed measurement time.

Click on the “Accept” button to accept the set measurement-related parameters and on “Close” (Illustration 3-9) to discontinue the process. If you have clicked on “Accept”, the measurement will be displayed in the table of the main window (Illustration 3-8), and the day of the measurement is highlighted blue in the calendar.

Datum: 28.08.2006

Starzeit: 08:10:15

Endzeit: 28.08.06 | 08:10:25

Intervallzeit: 00:00:10

Übernehmen Schließen

**Illustration 3-9: Measurement-related parameters**

### **Deleting a Measurement**

If you do not want to send this message to the pressure logger, you can also delete a measurement directly from the table. Only those measurements which are listed in the table will be transmitted to the pressure logger when the “Accept“ button (Illustration 3-8) is clicked on. If you want to delete a measurement from the table, you will have to highlight the particular measurement to be deleted by clicking on the line in which the measurement is listed. Then click on “Delete“ to delete the measurement from the table.

### **Programming a Measurement**

Programming the measurements in the pressure logger is started by clicking on “Accept“ (Illustration 3-8) and will be executed only if at least one and a maximum of five measurements are listed in the table of the window. In case of five measurement being listed, the “Add“ button will not be activated. Deleting one or more measurements from the table will activate the “Add“ button and enable the user to add one or more measurements until a total of five measurements is listed (see section Setting the Measurement Parameters). When all preconditions are fulfilled, the measurements will be transferred to the pressure logger as soon as the “Accept“ button has been clicked on. When all measurement data has been transferred properly, the starting time for the next measurement will be displayed.

### **”Repetitions“**

With the “Repeat“ feature (Illustration 3-8), the user can repeat a measurement. Please note that the requested interval (“daily“ or “weekly“) has to be set before the first measurement is added. If a measurement has already been added to the table, the above setting cannot be

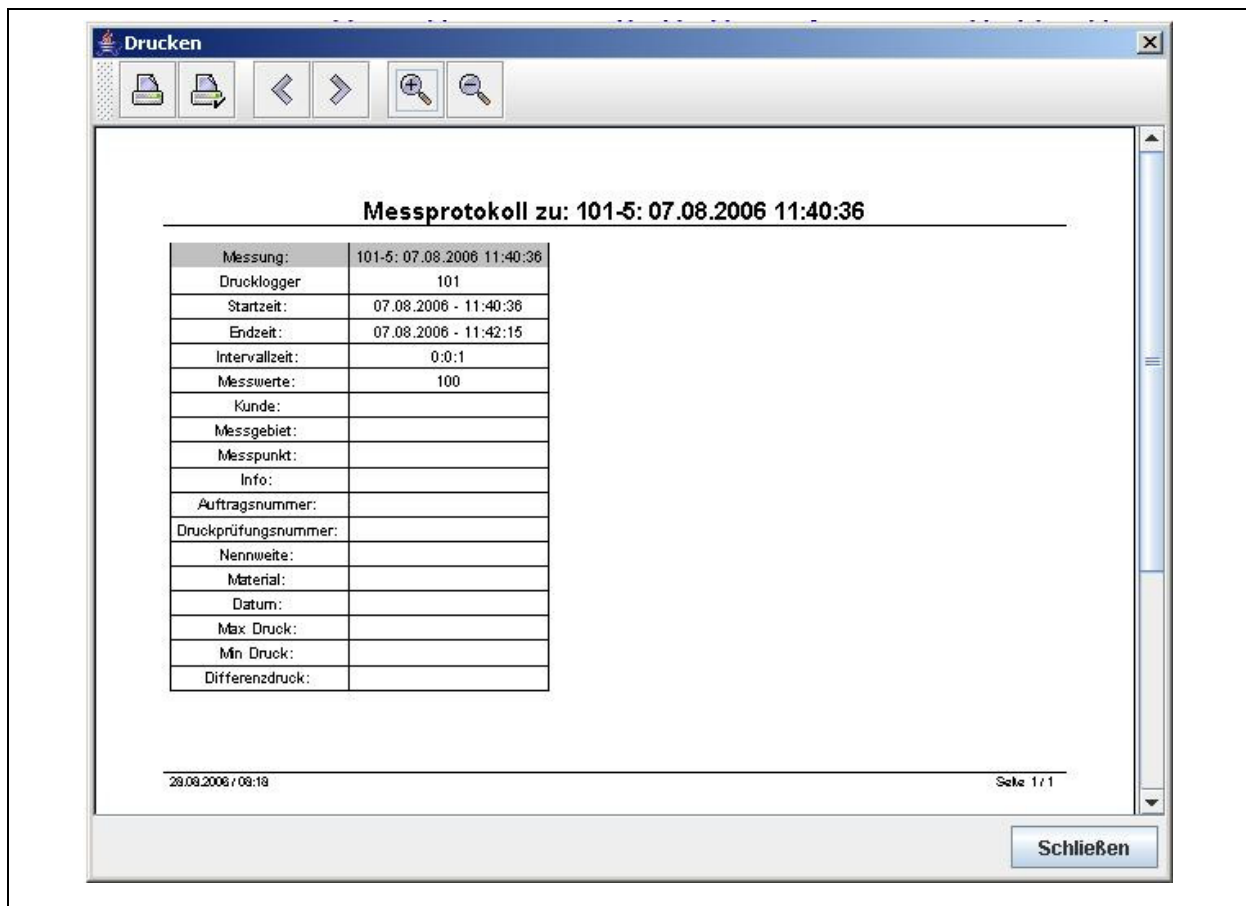
changed anymore. However, the number of repetitions can be set before the measurement parameters are determined.

When the “daily” option for a particular measurement has been selected, the measurement will be repeated every day at the same time. The “number” box shows the number of days on which the measurement is repeated. For example, if “0” is selected in this box, the measurement will be carried out once on the particular day as set, but it will not be repeated on any other day. If “4” repetitions have been chosen, the initial measurement will be carried out as set, and, additionally, another 4 repetitions of the same measurement will be carried out. This means that the user will receive a total of five measurements, carried out on 5 subsequent days. The same applies to the “weekly” setting with the measurement being repeated on a weekly basis instead of on a daily basis.

**Please note:** If a measurement has been set and a repetition has been determined for this particular measurement, no additional measurement can be set for the time between the initial measurement and the repetition of the measurement. Carrying out two measurements at the same point of time is not feasible.

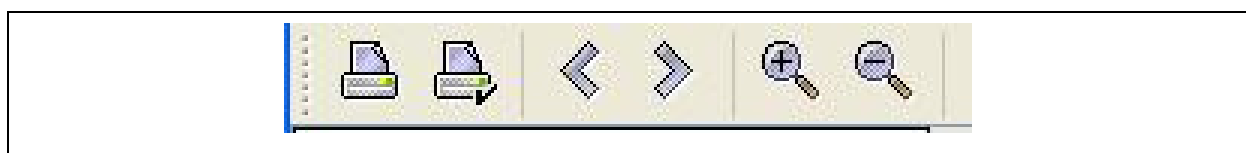
### 3.3.4 Print out the selected Measurement

This function is also a context-related function and provides a number of different results depending on the objects selected in the “Pressure Logger and Measurements” (section 2.4.1). If a pressure logger has been selected, some information on the pressure logger itself can be printed out. If a measurement has been selected, the diagram as shown in the “Measurement Curve” field will be printed out as well as the additional information which were input in the “Additional Information” dialogue box (section 4.2.3). As soon as the “Print out the selected Measurement” button has been clicked on, the dialogue window as shown in Illustration 3-10 below will appear. This window primarily constitutes a preview of the document to be printed out.



**Illustration 3-10: Print-out dialogue**

There are several functions for further document processing available through the menu bar (Illustration 3-11). The buttons with the magnifying glass enlarge or reduce the size of the document in the preview dialogue. If the document to be printed out has more than one page, the user can leaf through the particular pages with the “<“ and “>“ buttons. The second box (Illustration 3-11, from left to right) opens up a dialogue where the user can set the parameters for the page to be printed out. Here the user can determine the size of the page and the format of the paper (horizontal or landscape format). Press the first button if you want to print out the document.



**Illustration 3-11: Menu bar Print-out dialogue**

### 3.3.5 Export into Excel

Here you can export certain measurement values into a *Colon Separated Values* –CSV– file. CSV is a data representation procedure where the single values are separated with semicolons and saved in a file which can be further processed in Excel. Clicking on “Export selected Measurement” makes a window open up where the storage location and the file name of the exported file have to be determined. Clicking on “Save” finishes the exporting process. The functionality of this button is directly available in the detailed view (section 4.2.1). In the eclipsed version, however, it is necessary to define the section to be exported beforehand. For further information about the exporting process in the eclipsed mode, please refer to section 4.2.2.

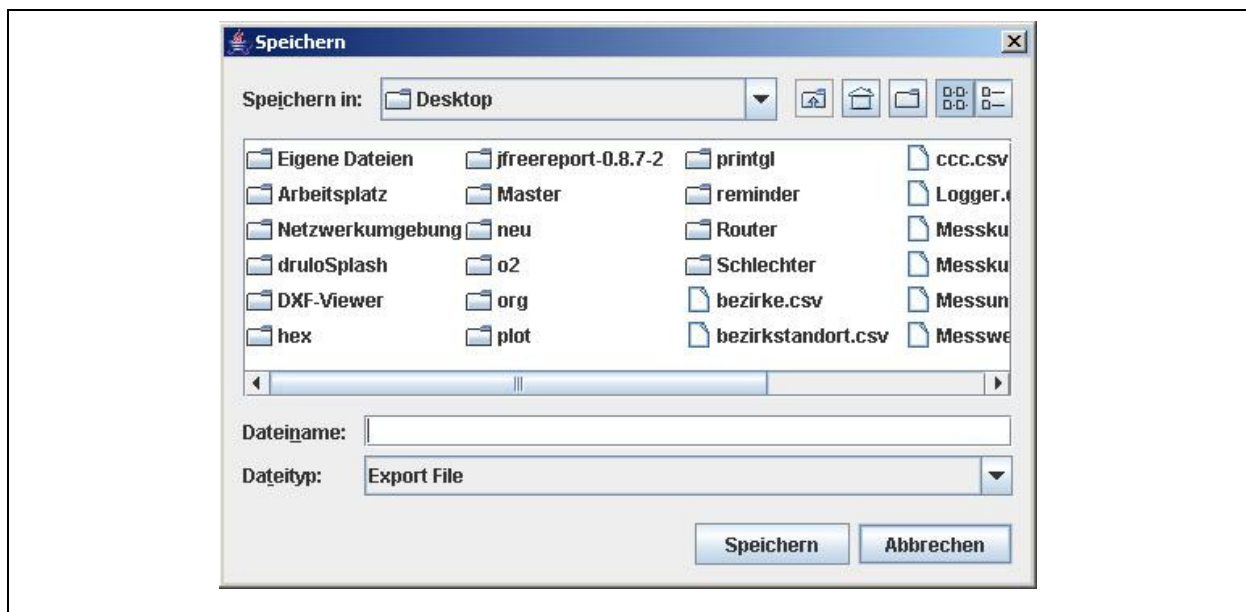


Illustration 3-12: Export dialogue

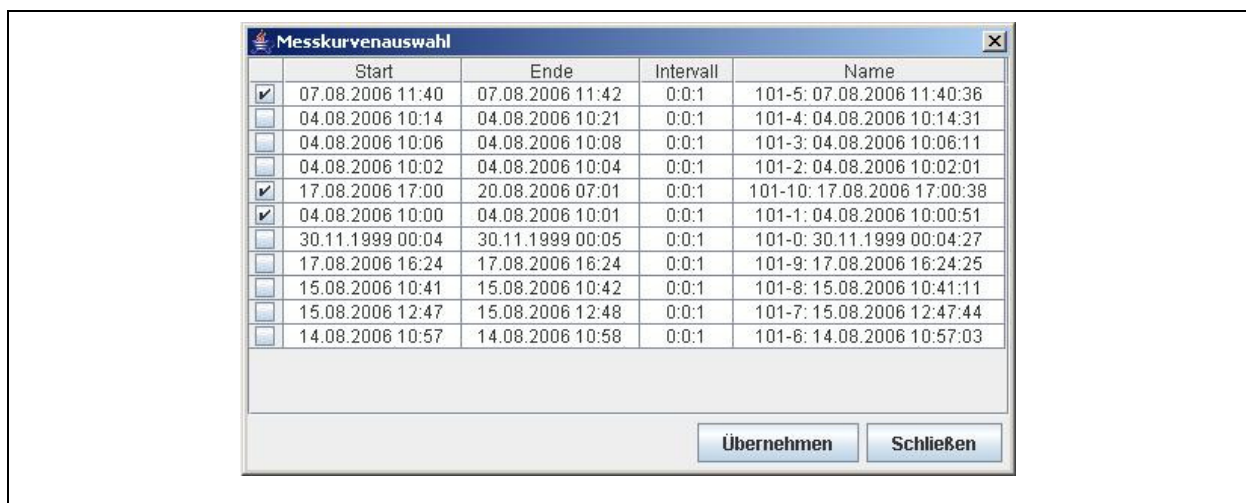
### 3.3.6 Deleting a Measurement

Measurements which are not required any longer can be deleted. Just highlight the measurement to be deleted by clicking on it with the left mouse key. Then confirm the button “Delete selected measurement” to delete the particular measurement from the database.

### 3.3.7 Eclipsing Measurement Curves

If you intend to eclipse some measurement curves, you will have to use this button. It enables you to display measurement curves featuring varying starting times and to equate certain

measurement points and to eclipse the curves in one diagram. As soon as you have clicked on “Eclipse Measurement Curves“, a new window will open up where you can select the curves to be eclipsed (Illustration 3-13). You have to tick the curves to be displayed in the diagram as shown in Illustration 3-13. Then click on the “Accept“ button to preview your selection in the ”Measurement Curve“ field. If the “Selection of Measurement Curves“ window shows too many measurements, you can assort the table by clicking on the table head. The assorting criteria are: “measurement starting time“, “measurement finishing time“, “intervals“, and “name of the measurement“. For further information on the functions as described above, please refer to section 4.2.2.



**Illustration 3-13: Selection of the Measurement Curves**

## 4 Programme functions

The following chapter is to provide you with an overview of the window functionality of the programme. In section 4.1, the “Pressure Logger and Measurements” field is explained. Here the data read out at the pressure logger and the corresponding measurement values are indicated. Section 4.2 is to explain the “Measurement Curve” field where the measurement values acquired by the pressure loggers are graphically displayed as line diagrams.

### 4.1 Pressure Logger and Measurements

This field indicates the pressure loggers and measurements connected to the read-out boards (Illustration 4-1, on the left-hand side). Any measurements which have already been input into the database will be listed automatically under the particular icon of the pressure logger board upon start of the programme. They have green icons which are to prescind a paper document. Those pressure loggers which have been read out are listed according to the measurements saved and have a bluish icon which looks like a logger. If there are any new measurements listed on the pressure logger which have not yet been saved in the database, these measurements will be read out automatically by the programme and positioned below the logger icons in the display.

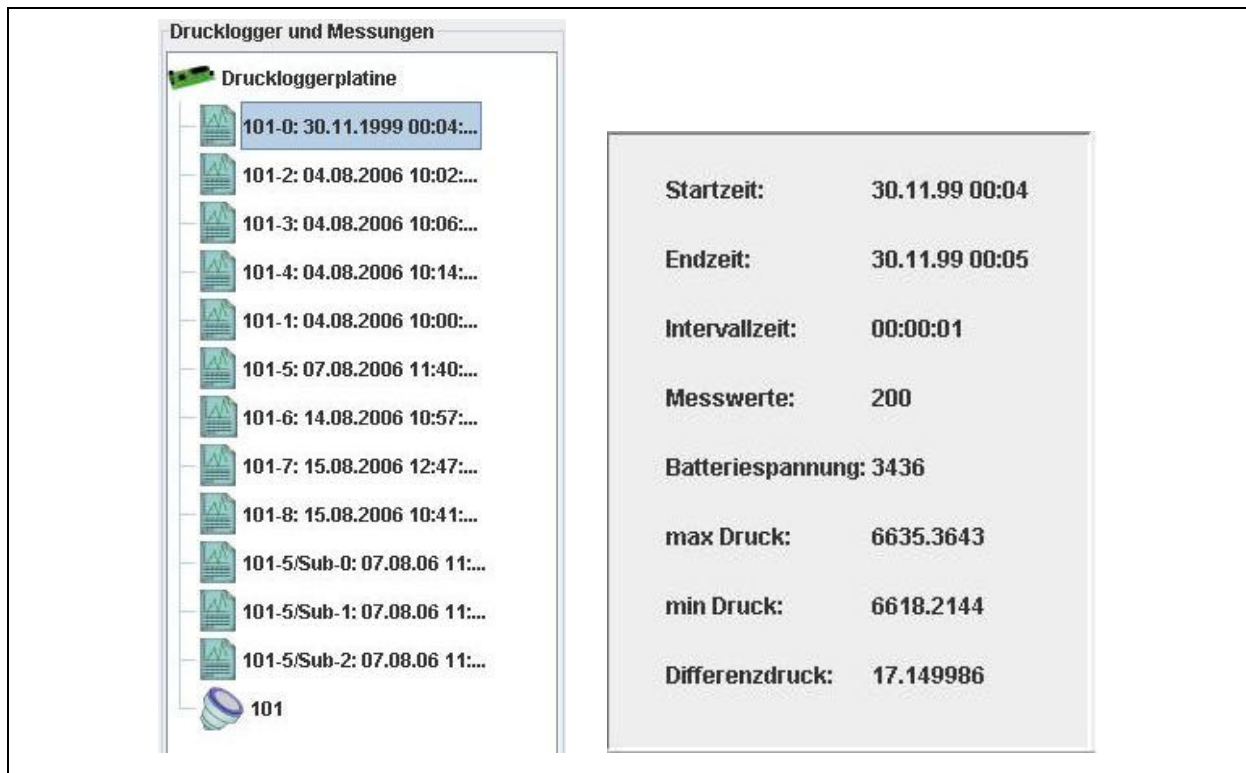


Illustration 4-1: Pressure Logger and Measurements



In case of any error occurred during the read-out process, the programme will indicate this error to the user by displaying an error message on the screen. Under certain circumstances, this message may be generated during the read-out process. If a data set of a measurement has been read out incompletely, the particular measurement will be marked with a corresponding icon in the programme. These icons contain a red triangle and a white exclamation mark. You should then read out the data again by selecting the particular measurement again.

**Please note:** The programme will not save any measurement with an icon containing a red triangle and a white exclamation mark. This means that as soon as the computer is re-started, the particular measurement will not be listed again as it has not been saved in database.

After the programme has been started, only the “Read out Pressure Logger“ and the “Eclipse Measurement Curves“ buttons will be activated in the menu bar (section 3.3) if neither a pressure logger nor a measurement has been selected. Therefore, you can read out only those pressure loggers in this mode which have been saved to the read-out board (section 3.3.1) or eclipse only those measurements which are already available in the database (section 3.3.7).

In order to use any further functions of the menu bar, you will either have to mark a measurement or a pressure logger. If you have already marked a measurement by clicking on it with the left mouse key, the functions “Print out selected Measurement“ (section 3.3.4), „Export into Excel“ (section 3.3.5), and “Delete Measurement“ (section 3.3.6) will be available. If you have already marked a pressure logger, the functions “Setting the Pressure Logger Time“ (section 3.3.2) and “Programming the Measurement“ (section 3.3.3) will be available. The functions “Read out the Pressure Logger“ and “Eclipsing Measurement Curves“ are not selection context-related and are thus available irrespective of the object selected in the display.

Detailed information will be displayed below the “Pressure Logger and Measurements“ window (Illustration 4-1, on the right-hand side) after a pressure logger or a measurement has been selected. This information depends on the object selected (see also section 2.4.1).

## 4.2 Measurement Curve

The “Measurement Curves” field shows the values of those pressure loggers as a diagram which have been selected in the “Pressure Logger and Measurements” field (illustration 5.2.1). However, there will be no information displayed in the “Pressure Logger and Measurements” field. The measurement values will be displayed as a line diagram. The Y-axis shows the pressure, and the X-axis shows the time in hours, minutes, and seconds (HH:mm:ss) for a measurement curve. If several measurement curves are to be eclipsed, the time unit can also be changed to months or years depending on the time between the starting times of the particular measurements. This field also enables the user to gain detailed information about a certain measurement value by positioning the cursor on the value in question for a short while. The programme will then issue a so-called “*Tool Tip*” which reveals the date of the measurement and the exact value acquired at the particular measurement point.

The diagram also features a zoom function to enlarge or reduce the size of the graphic. Just click on the right mouse key and select the corresponding function in the context menu. The user has the option to zoom in or out either one of the axes or both axes. As an alternative, a certain section of the graphic can also be zoomed out, if requested. This section can be selected by pressing the left mouse key and will be displayed in a larger scale.

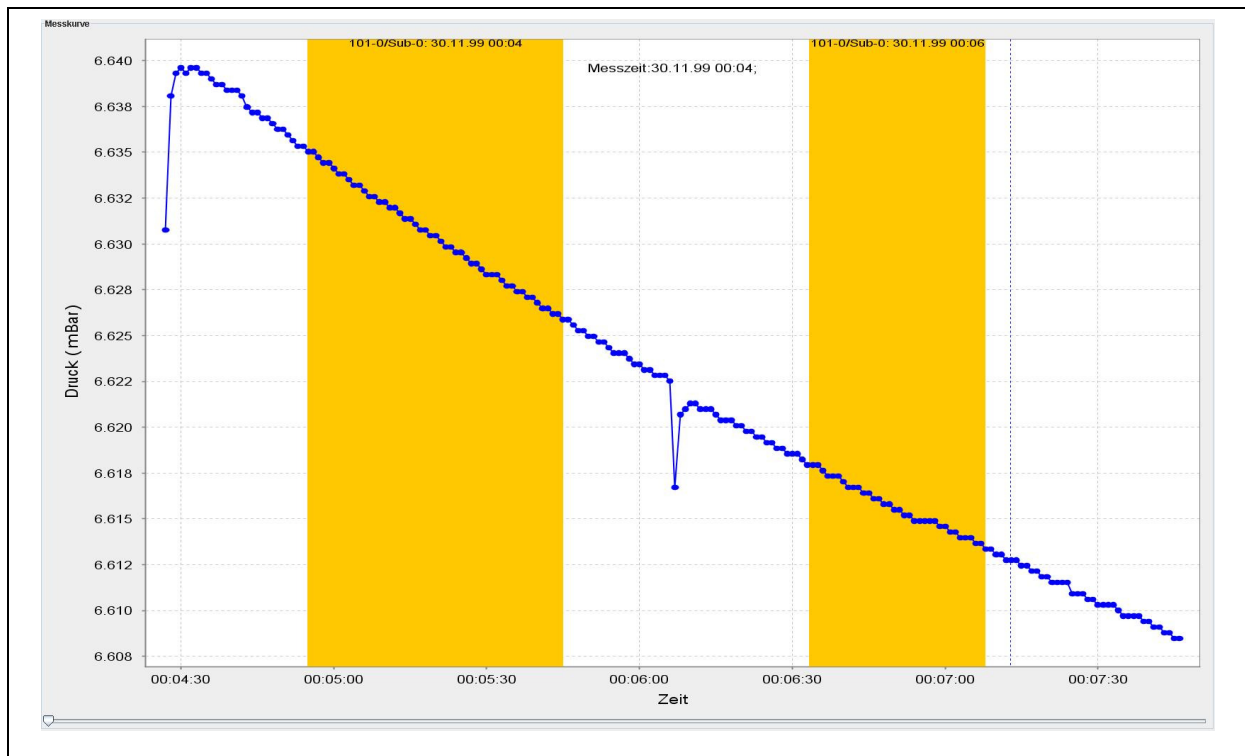
Further functions are available through the “Divide“, “Determine“, “Eclipse“, or “Mark“ buttons. Section 4.2.1 is to describe the “Divide“ and “Determine“ functions as these functions are only available for this particular view, whereas section 4.2.2 is to describe the remaining two functions.

### 4.2.1 Detailed View

Additional functions for this field are available through the buttons as shown in Illustration 2-1. If you are working in the Detailed View field, i.e. you are working on the display of a single measurement curve, you can use the “Divide“ and “Determine“ buttons to divide the measurement curve into several curves or to determine the difference in pressure between the maximum pressure level and the minimum pressure level occurred during the measurement procedure.

## Dividing the Curve into Sections

The “Divide“ feature offers the option to extract a certain part or several parts of a curve. Click on the button and move the mouse cursor into the line diagram. A broken vertical blue line will be created in the diagram. This line will follow the horizontal movements of the cursor and is to define both limits (beginning and end) of the section to be extracted. When you now click on the diagram with the left mouse key and move the cursor to the left, the programme will create a yellow field in the diagram. This yellow field can be enlarged or reduced in size by moving the cursor. Another click on the diagram finishes the creation of the section to be extracted. Now it is only the blue line which follows the movements of the cursor. You can repeat this process a couple of times to extract a number of sections into a separate measurement curve.



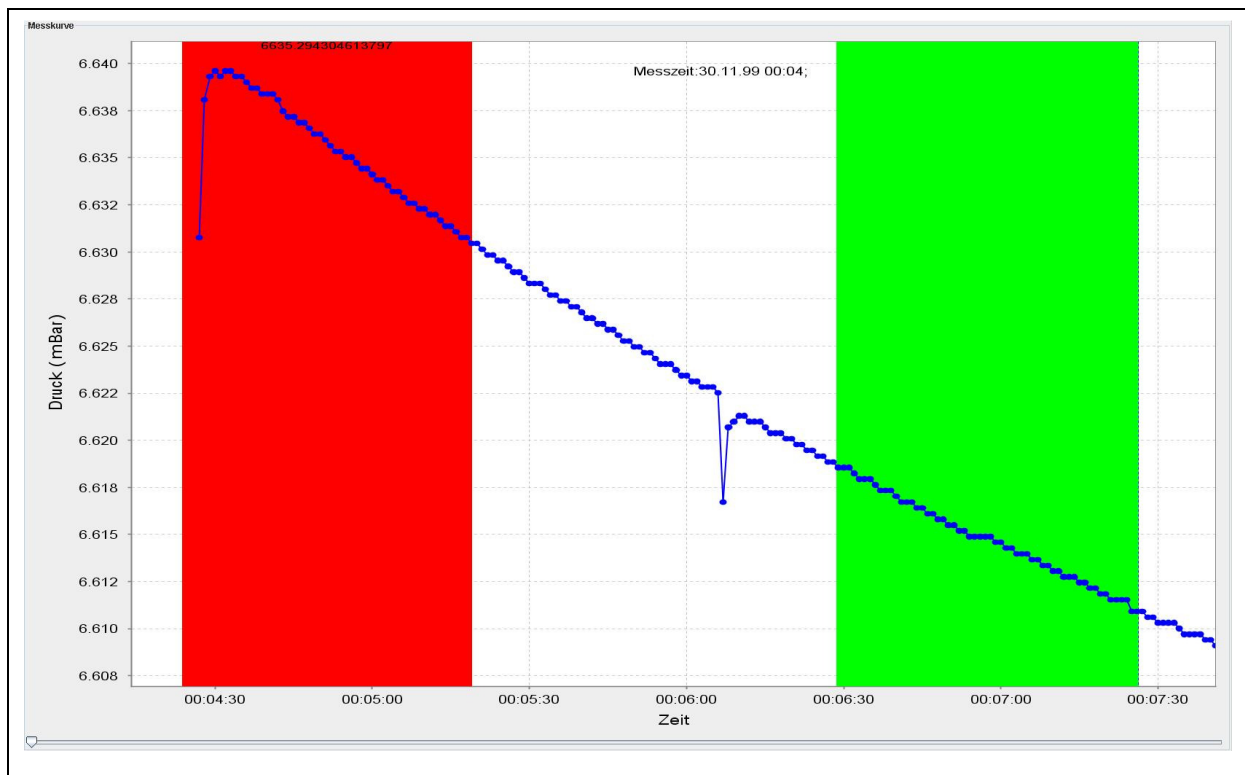
**Illustration 4-2: Dividing a Measurement Curve into several Sections**

When all sections to be extracted have been marked (Illustration 4-2), click again on the “Divide“ button to close the process. The marked sections will be removed from the diagram, and the new measurements will be integrated into the “Pressure Logger and Measurements“ field.

## Determining the Difference in Pressure

This function enables the user to determine the difference in pressure for a certain measurement curve. You require two selection areas in the diagram: one red area representing the high-pressure area and a green area for the low-pressure area. All measurement values within a selection area will be used for the determination of the pressure difference. This difference in pressure is calculated on the basis of the average measurement values of the particular selection area. Illustration 4-3 shows the two marked areas. Once the calculation process is finished, the results will be displayed in the “Pressure Logger and Measurements” field (see Illustration 2-5).

To start the calculation process, click on “Determine” and move the cursor into the line diagram. This will generate a broken bluish line in the diagram. This line will follow the horizontal cursor movements and represents the two section limits (beginning and end).



**Illustration 4-3: Determining the Difference in Pressure**

Click on the diagram with the left mouse key. When you move the cursor to the left, a red area will be created which can be enlarged or reduced in size by moving the cursor. Clicking on the diagram again finishes the creation of the marking section. The measurement values required to determine the high pressure level have been marked now. Now it's the blue line again that follows the movements of the cursor. The next step is to create the green area in the

diagram to determine the low-pressure average value, which requires the same procedure as described above with the red area. When you click on the diagram the second time to close the marking area, the function automatically deletes the marked areas and indicates the calculated values as shown in Illustration 2-5.

#### 4.2.2 View of eclipsed Curves

In this mode, several diffusing measurement curves can be eclipsed through the “Eclipse“ or ”Mark“ buttons. Also, certain data sections can be selected and then exported into Excel. The following sections are to describe the above functions in detail.

##### Eclipsing

As soon as you have selected the display mode with various measurement series (section 3.3.7), you have the option to eclipse several measurement curves. This function enables you to eclipse any measurement point of the measurement series (one measurement point per measurement series). Just highlight the measurement points to be eclipsed by clicking on them and thus marking them with the left mouse key. Now a vertical red line to cross the marked point is created in the diagram. Marking another measurement series requires the same procedure. The set markings as shown in Illustration 4-4 can be deleted by clicking with the left mouse key on the empty part of the diagram. The markings you had set are deleted and you can start on new markings. As soon as all new markings have been set, you can start eclipsing the measurement curves by clicking on the ”Eclipse“ button.

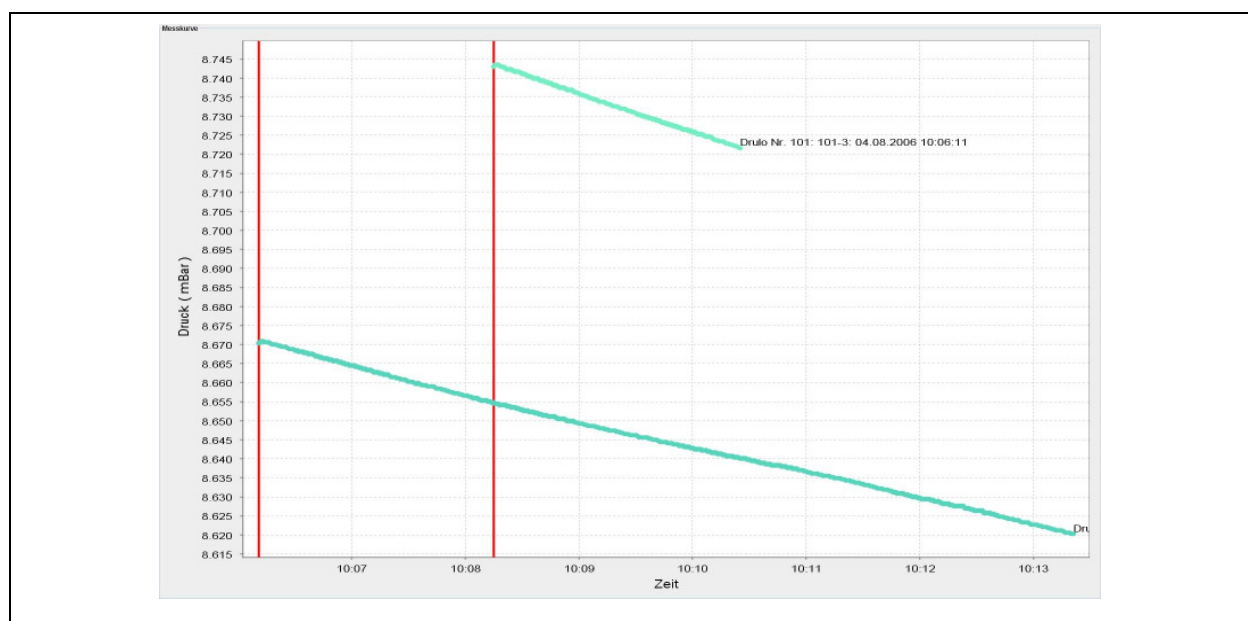
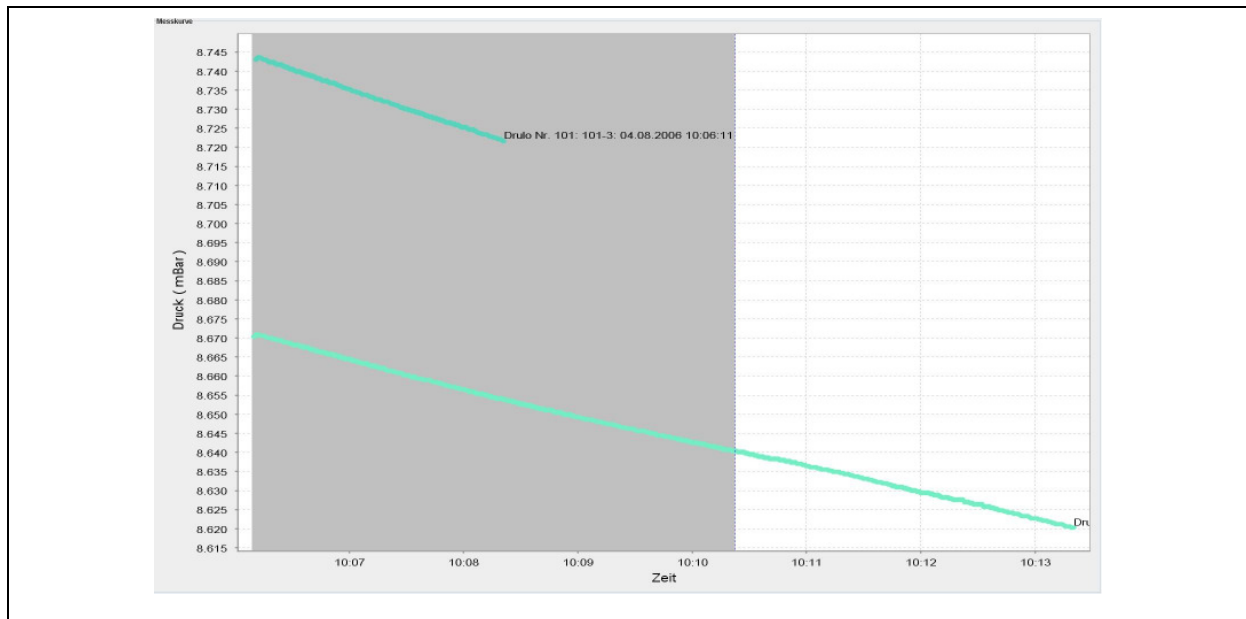


Illustration 4-4: Eclipsing measurement curves

## Marking

This eclipse mode also offers the option to export potential measurement values. However, only those values are exported which have been marked beforehand. As a standard feature, the function "Export selected Measurement" (section 3.3.5) in this view has not been activated and cannot be activated before the particular measurement values have been marked.




**Illustration 4-5: Marking the sections to be exported**

To activate the function, click on the "Mark" button. Now a vertical broken blue line is created in the diagram and follows the horizontal cursor movements when the cursor is moved across the diagram. This line defines the limits (beginning and end) of the marking area. When you now click on the diagram with the left mouse key and move the cursor to the left, the programme will create a grey area in the diagram. This grey area can be enlarged or reduced in size by moving the cursor. Another click on the diagram will finish the creation of the marking area (Illustration 4-5). The function "Export selected Measurement" is available to the user now. Concerning the export of the marked area, please proceed as described in section 3.3.5 above. When you have finish the exporting procedure, you can leave the marking function by clicking on the "Mark" button. The created marking area will be deleted from the diagram, and the function "Export selected Measurement" will no longer be available.

### 4.2.3 Additional Information

The detailed view enables the user (section Detailed View) to lodge additional information on a certain diagram with the database. This additional information will be printed out when the diagram is printed out (see Illustration 3-10). If there is no measurement-related information lodged, the corresponding fields in the measurement protocol remain empty and can be complemented manually at a later point of time, if required.

If you want to add certain information to a measurement, please select the particular measurement in the “Pressure Logger and Measurements“ field to make it appear in the ”Measurement Curve“ field. Then double-click on the diagram with the left mouse key to open the “Additional Information“ window. Now you can complement the information required in the window. Confirming by clicking on the “Accept“ button will save the input in the database. The input can be rejected by clicking on “Close“, the process will be discontinued.



**Zusatzinformationen**

Kunde: Wasserwerk

Messgebiet: Dachau

Messpunkt: Hydrant 0815

Auftragsnummer: 12345

Druckprüfungsnummer: 6789

Nennweite: 100

Material: PN

Datum: 30.08.06

Info: Erfolgreiche Messung, keine Schäden feststellbar.

Übernehmen Schließen

Illustration 4-6: Additional information